

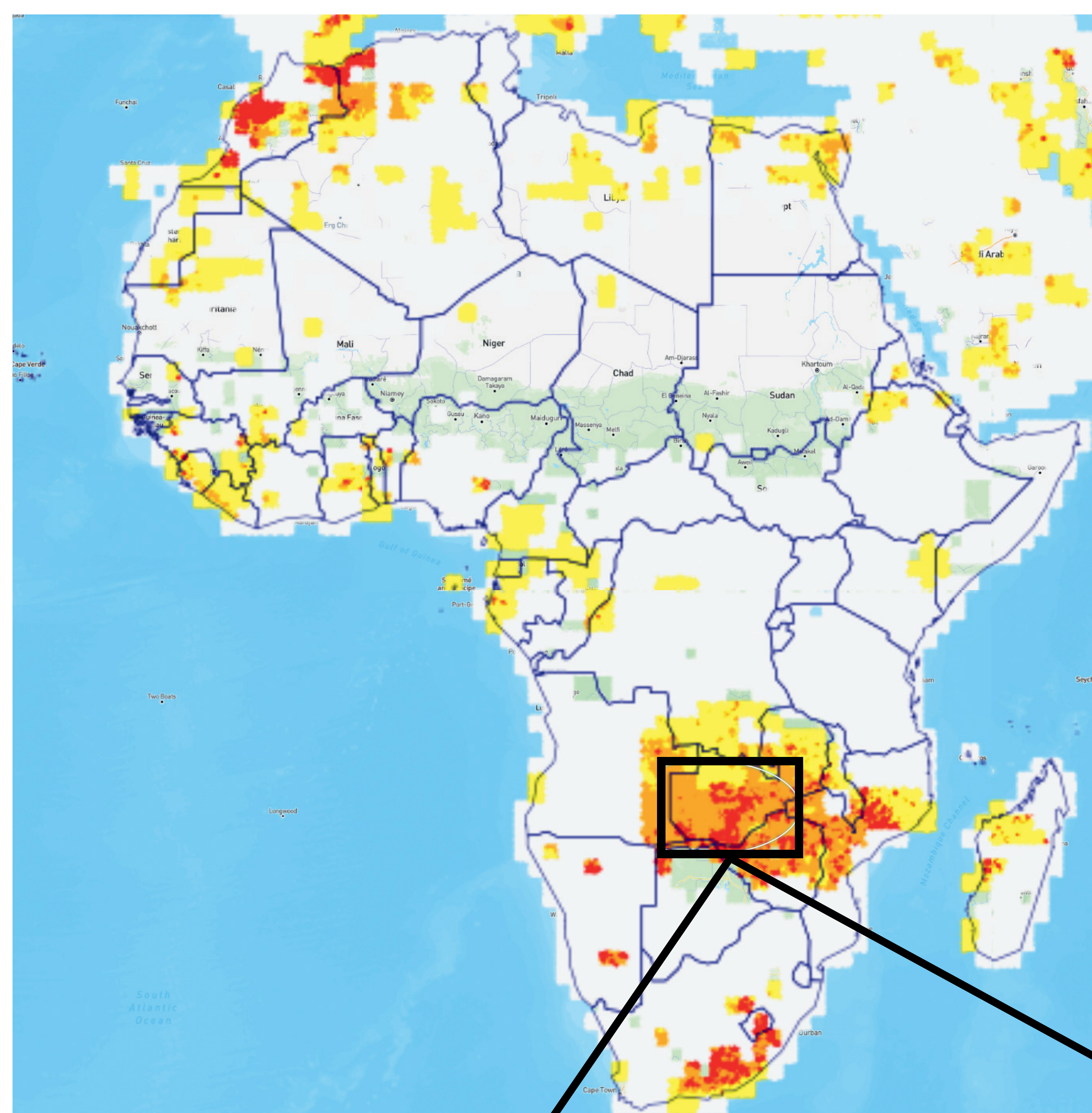


PART OF NORWEGIAN  
REFUGEE COUNCIL

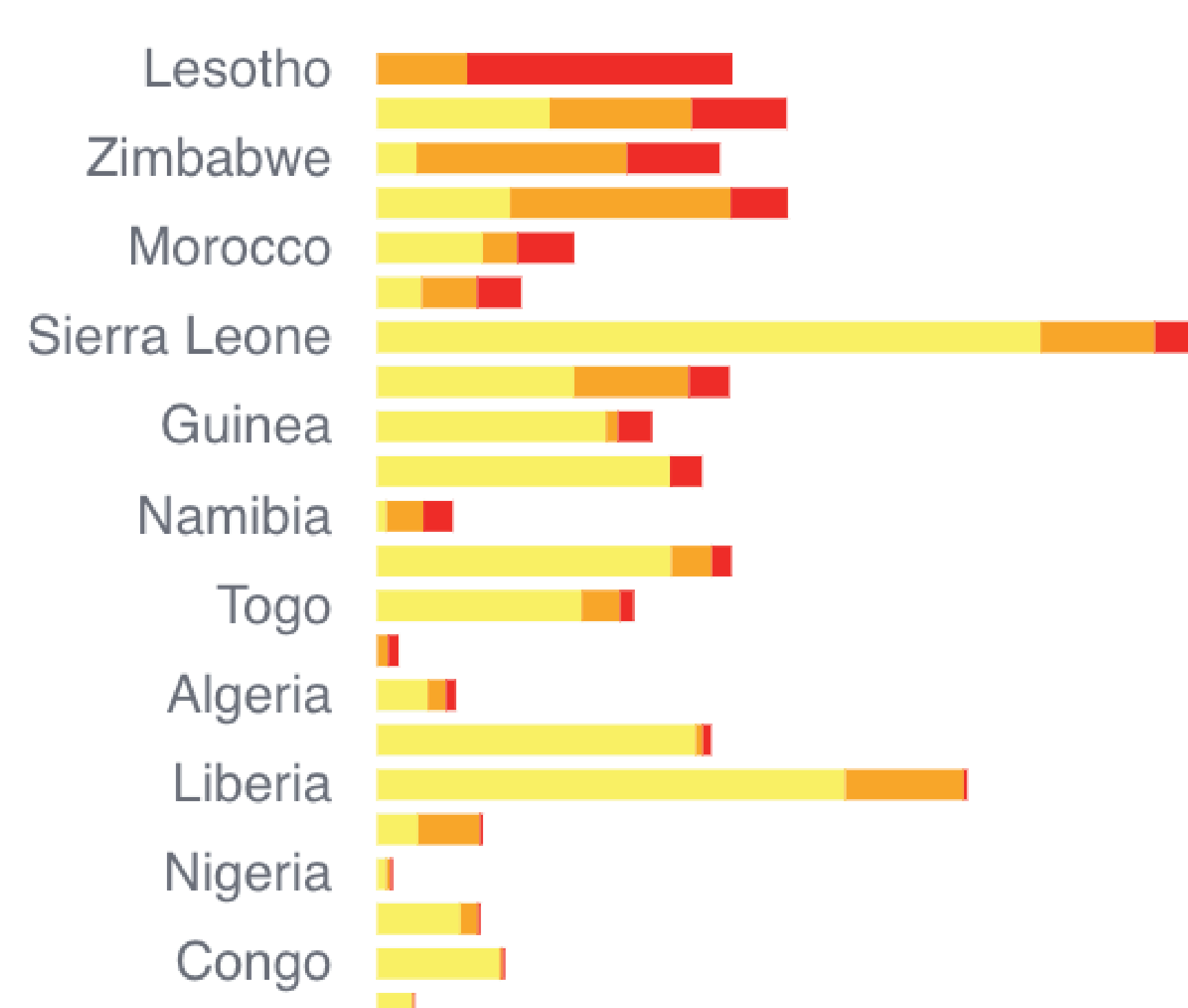


# AFRICA DROUGHT MONITORING AND ADVISORY (ADMA) SYSTEM

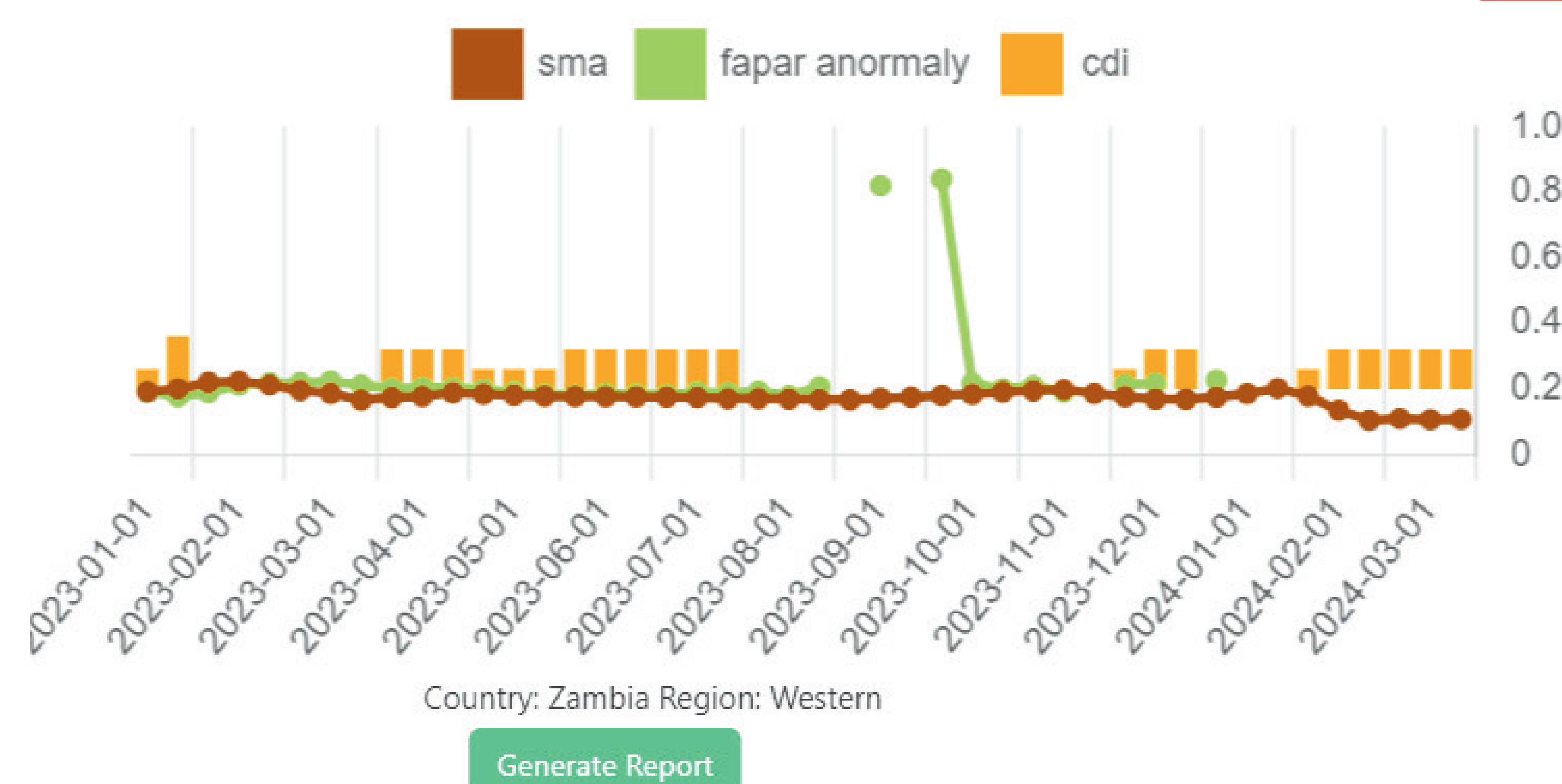
## Combined Drought Index (CDI) for the 2nd decad of March 2024



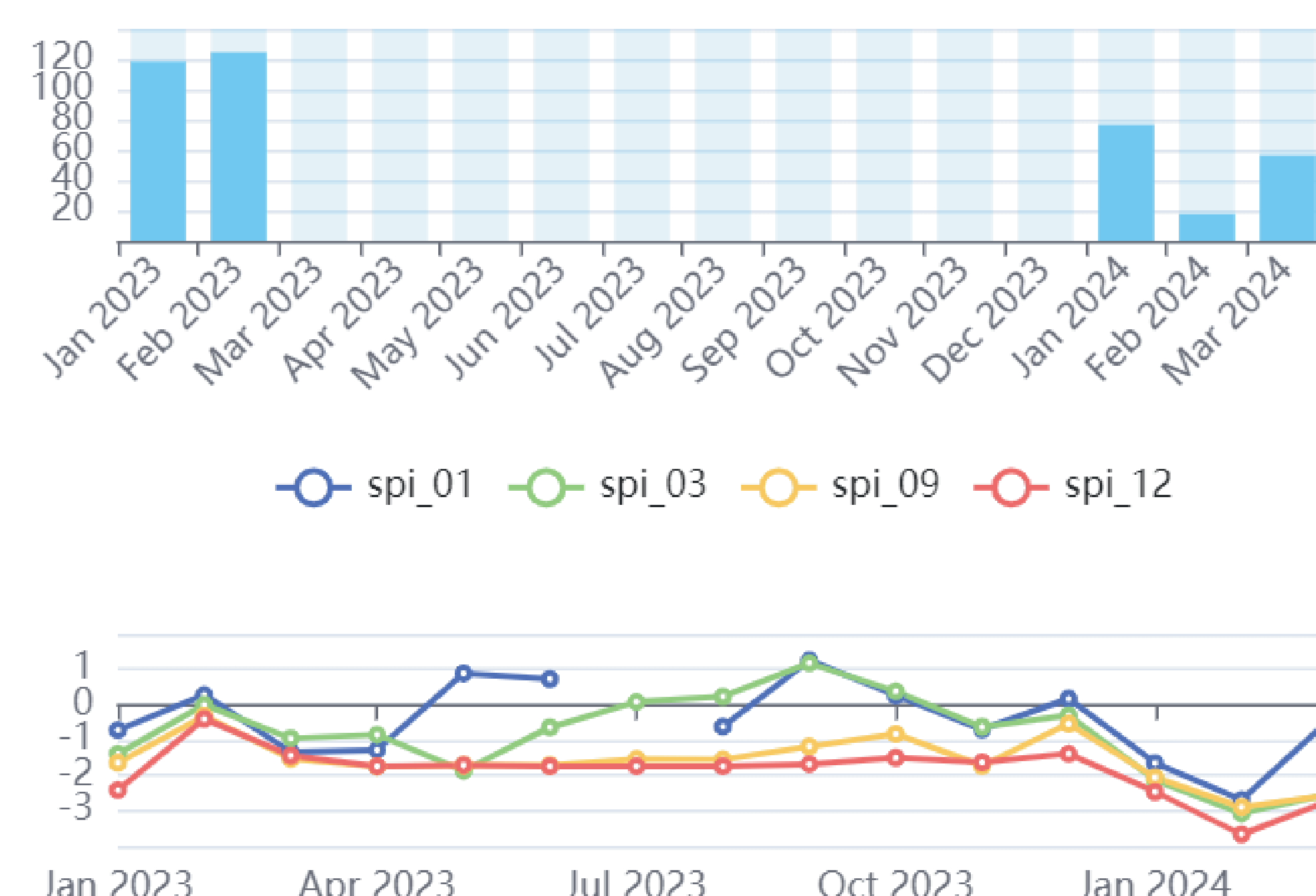
### Drought Stress Levels per Country



### Pixel time series



### Rainfall (mm)



Drought impact in East  
Africa, 2009

## What is ADMA?

It is a near-real-time system that uses Earth Observation and Weather information to monitor drought conditions and issue Early Warning in Africa. It contains various tools, such as graphs and maps, to display, analyse information and generate drought reports. It provides an overview of the situation in the case of imminent drought.

#EarlyWarningForEarlyAction



Scan Here



ada.acmad.org