



**Centre d'Application et de Prévision Climatologique
de l'Afrique Centrale**



NINETEENH AFRICAN CONTINENTAL CLIMATE OUTLOOK FORUM (ACCOF19)

**Climate assessment for JFMA 2025 and Outlook for
JJAS 2025 over Central Africa**

May 30, 2025
Online

Contact : contact@capc-ac.net



PRESENTATION PLAN



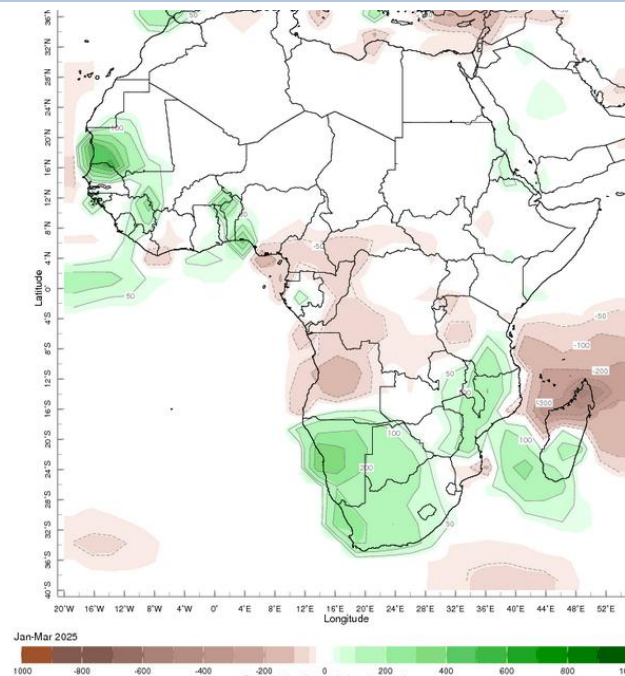
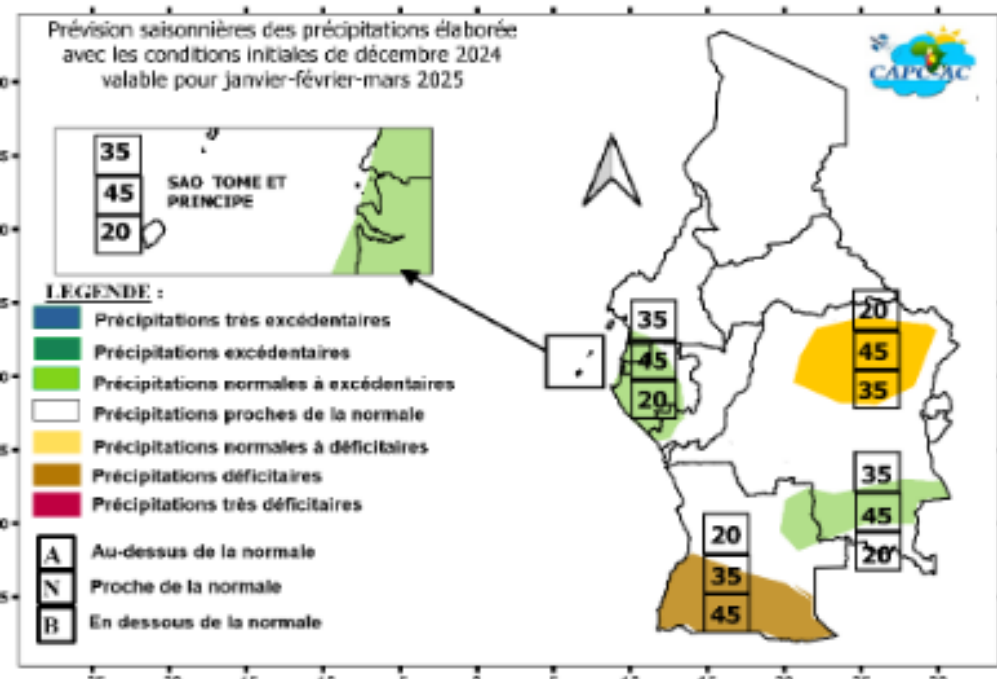
I. CLIMATE ASSESSMENT FOR JFM AND FMA 2025

II CLIMATOLOGICAL SITUATION FOR JJA AND JAS SEASONS

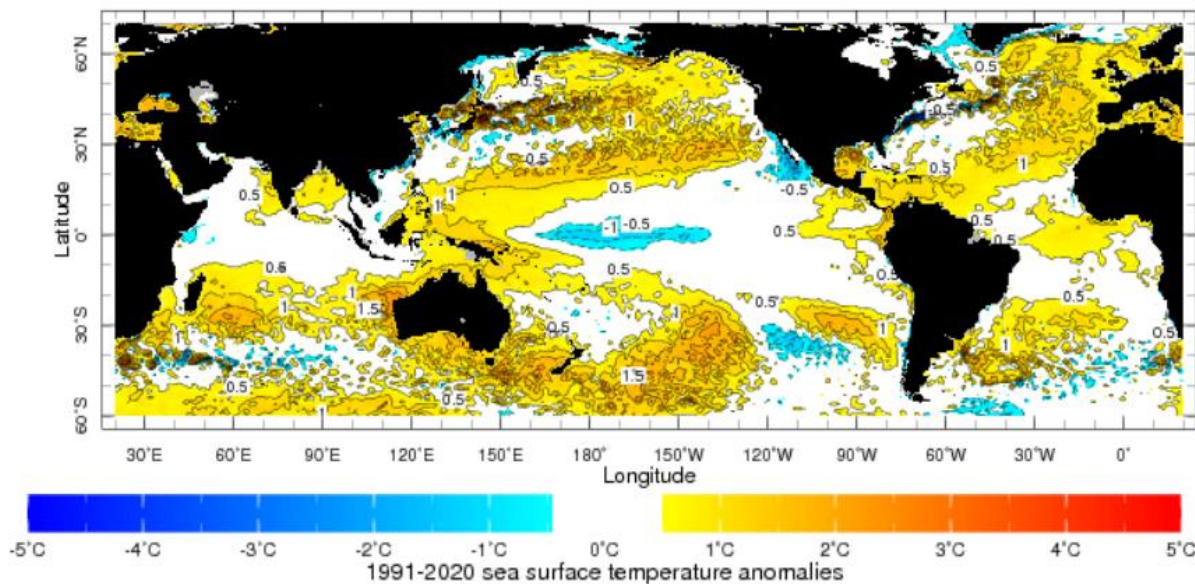
III. DRIVERS AND OUTLOOK PREDICTIONS FOR JJA AND JAS 2025

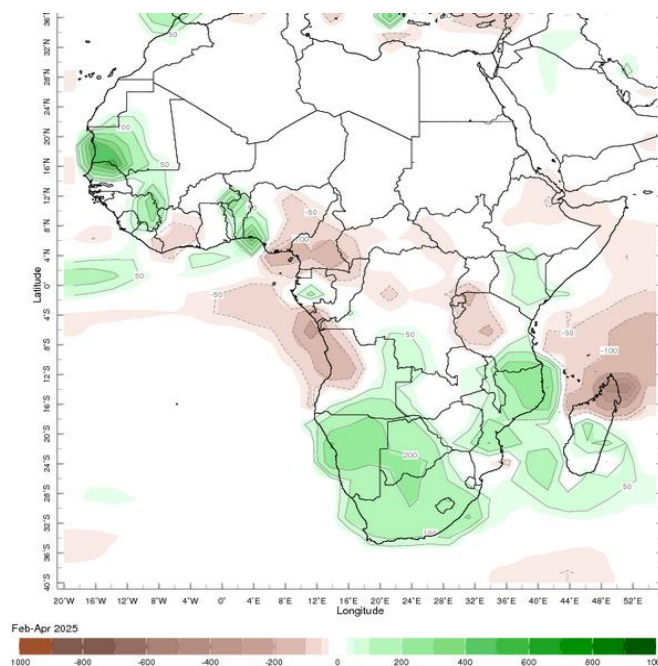
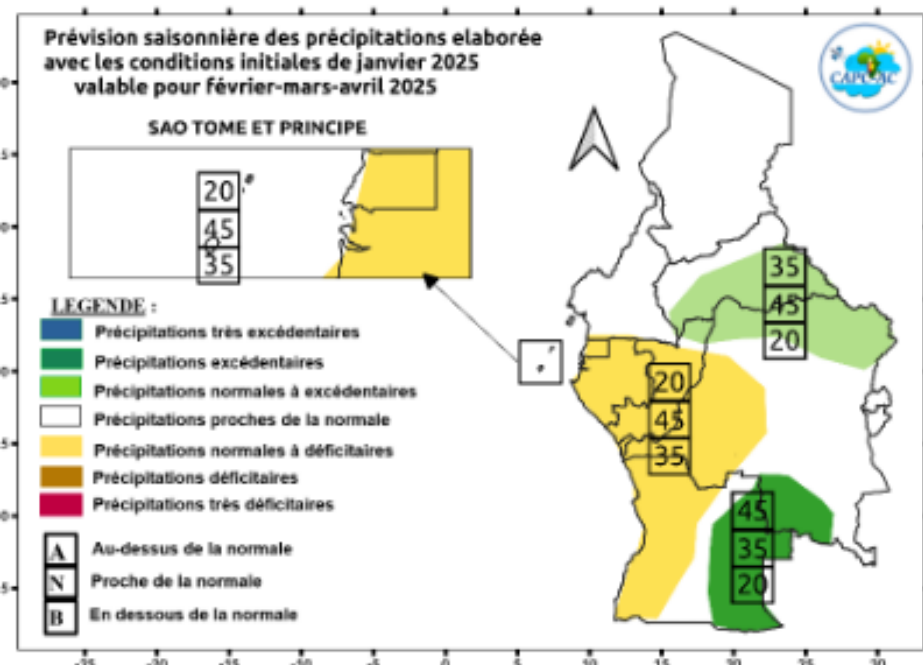


I. CLIMATE ASSESSMENT FOR JFM AND FMA 2025

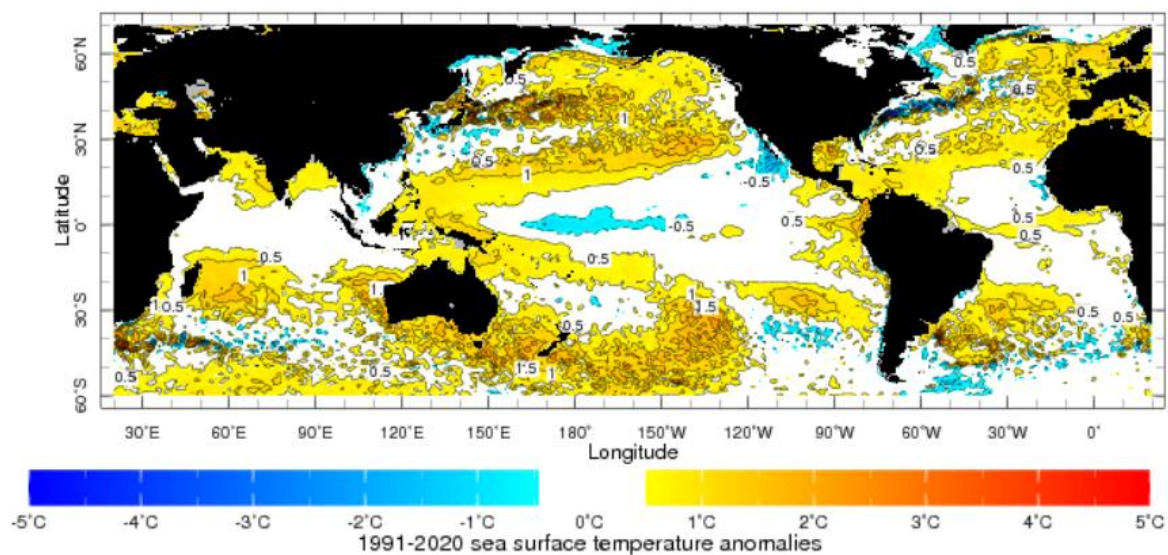


zlev 0.0 meters Time Jan-Mar 2025



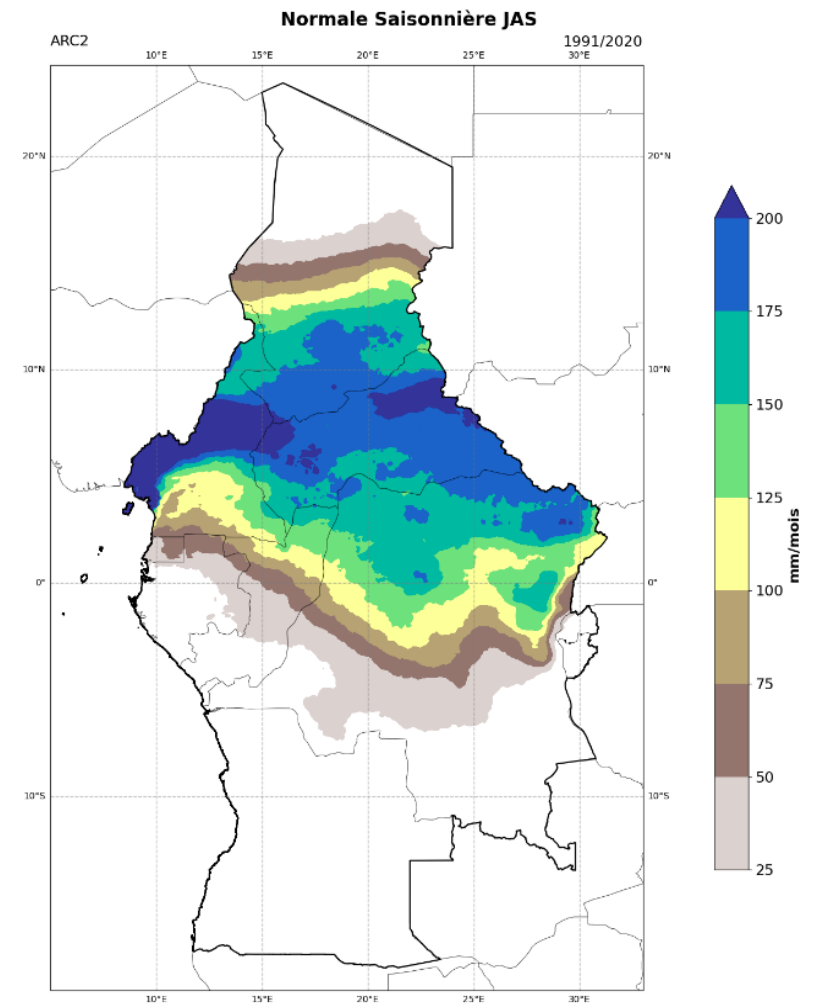
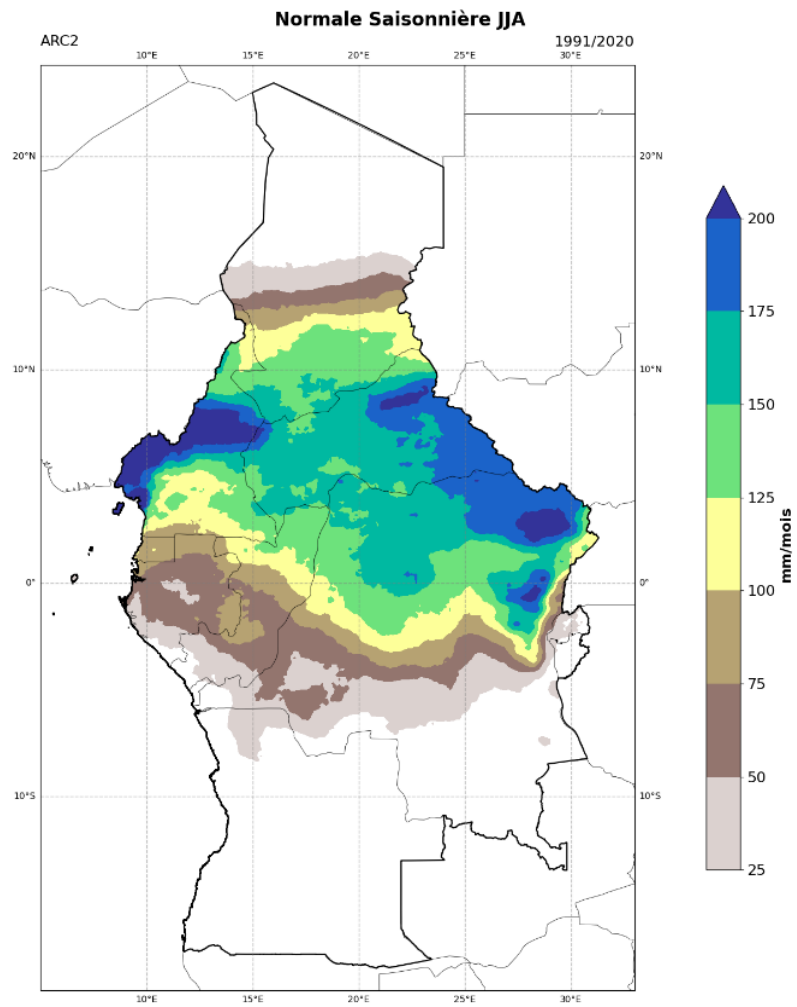


zlev 0.0 meters Time Feb-Apr 2025





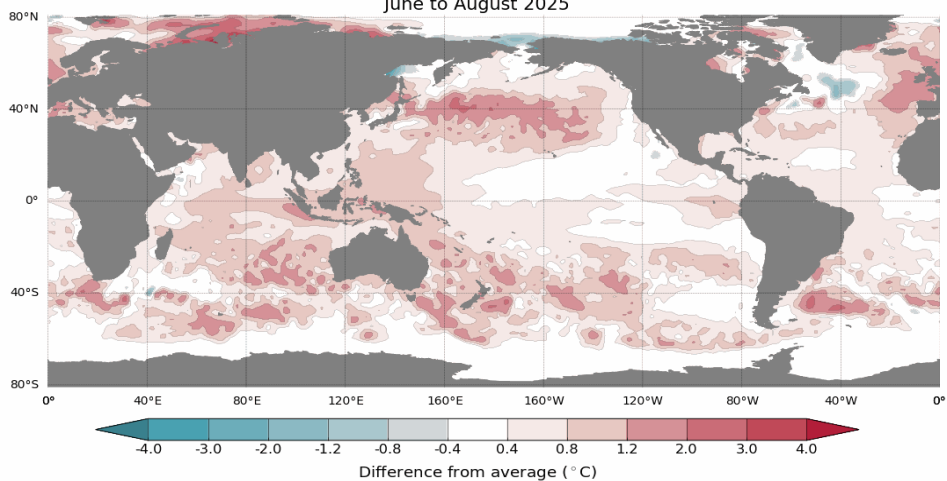
II CLIMATOLOGICAL SITUATION FOR JJA AND JAS SEASONS IN CENTRAL AFRICA REGION





DRIVERS AND OUTLOOK PREDICTIONS FOR JJA AND JAS 2025

Difference from average sea surface temperature forecast for June to August 2025

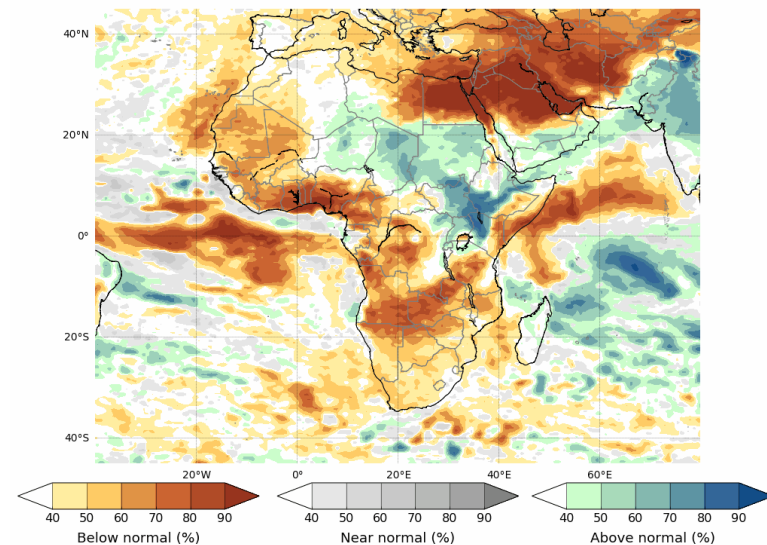


www.bom.gov.au/climate
© Commonwealth of Australia 2025, Australian Bureau of Meteorology

Model: ACCESS-S2
Base period: 1981-2018

Model run: 26/05/2025
Issued: 28/05/2025

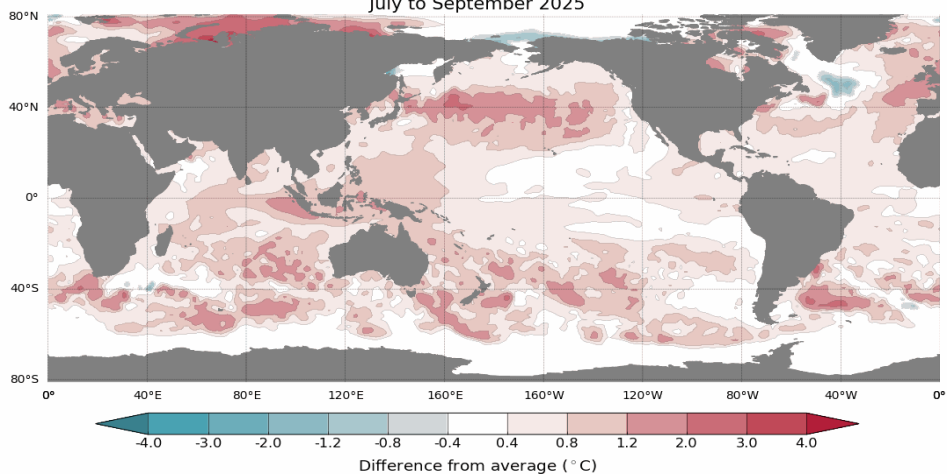
Tercile rainfall probabilities for June to August 2025



www.bom.gov.au/climate
© Commonwealth of Australia 2025, Australian Bureau of Meteorology

Model: ACCESS-S2
Base period: 1981-2018
Model run: 26/05/2025
Issued: 28/05/2025
Boundaries are not considered authoritative

Difference from average sea surface temperature forecast for July to September 2025

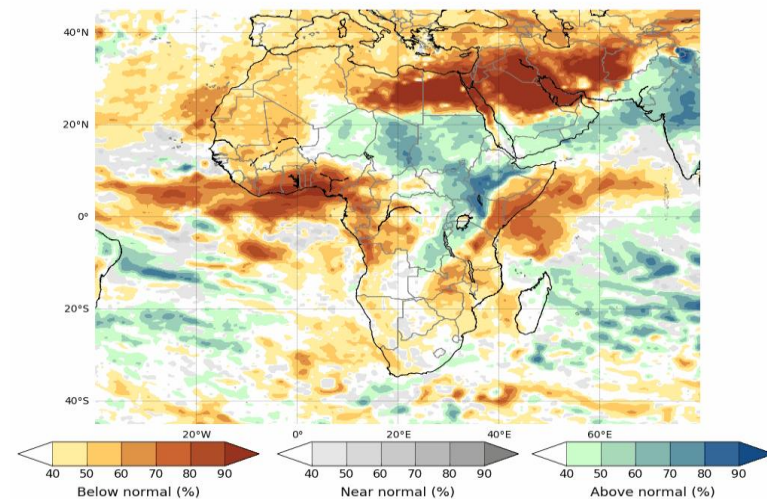


www.bom.gov.au/climate
© Commonwealth of Australia 2025, Australian Bureau of Meteorology

Model: ACCESS-S2
Base period: 1981-2018

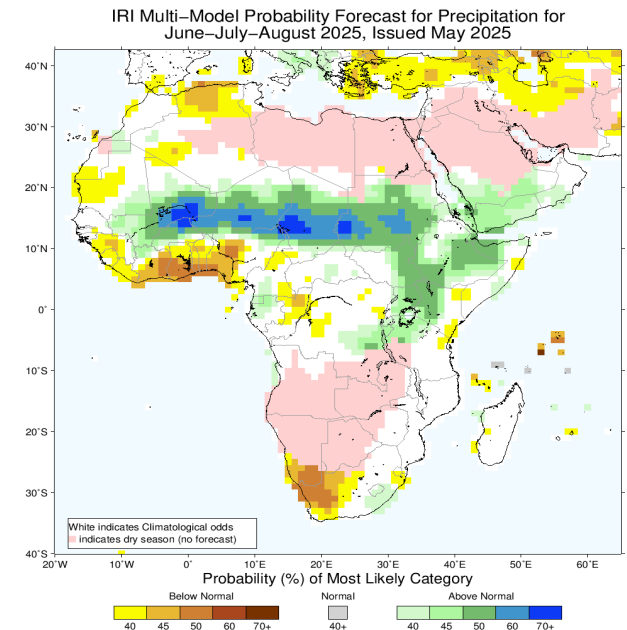
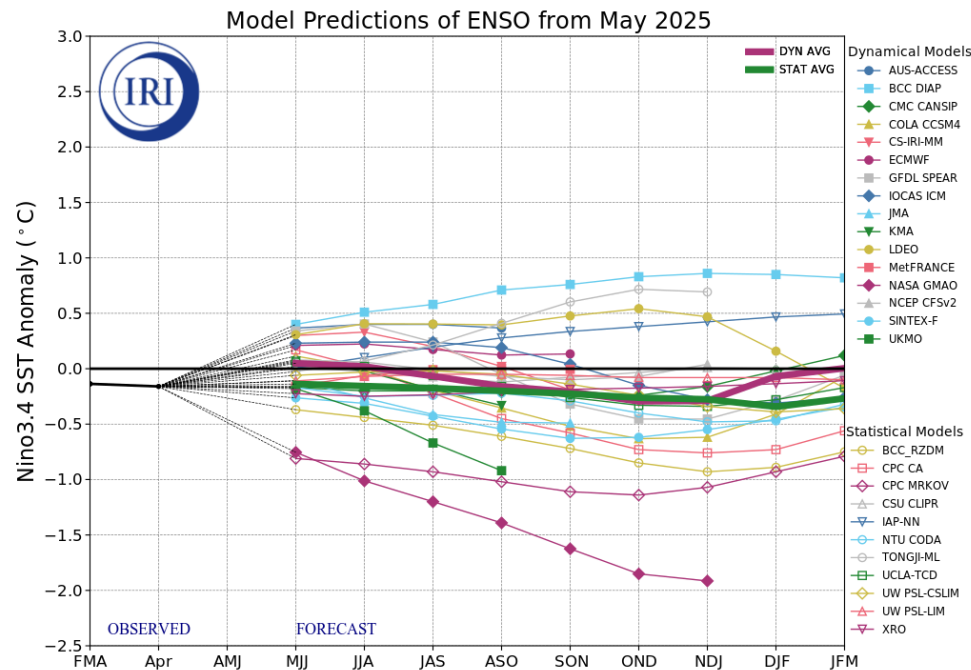
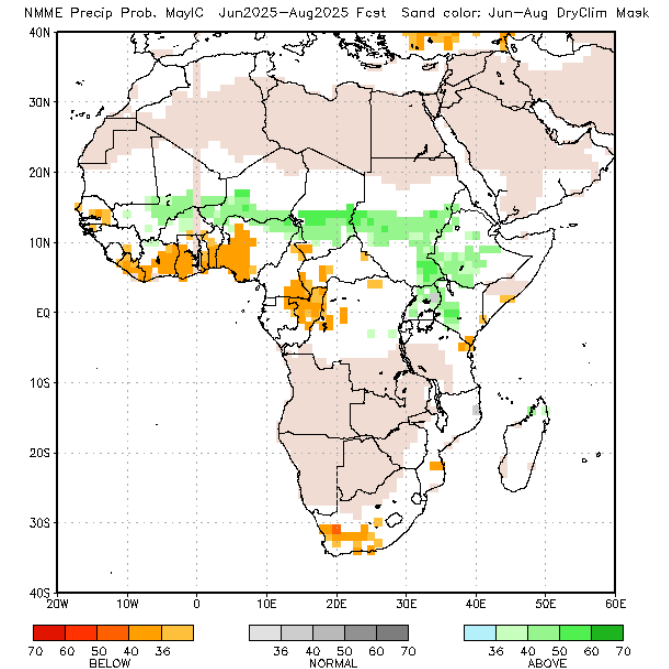
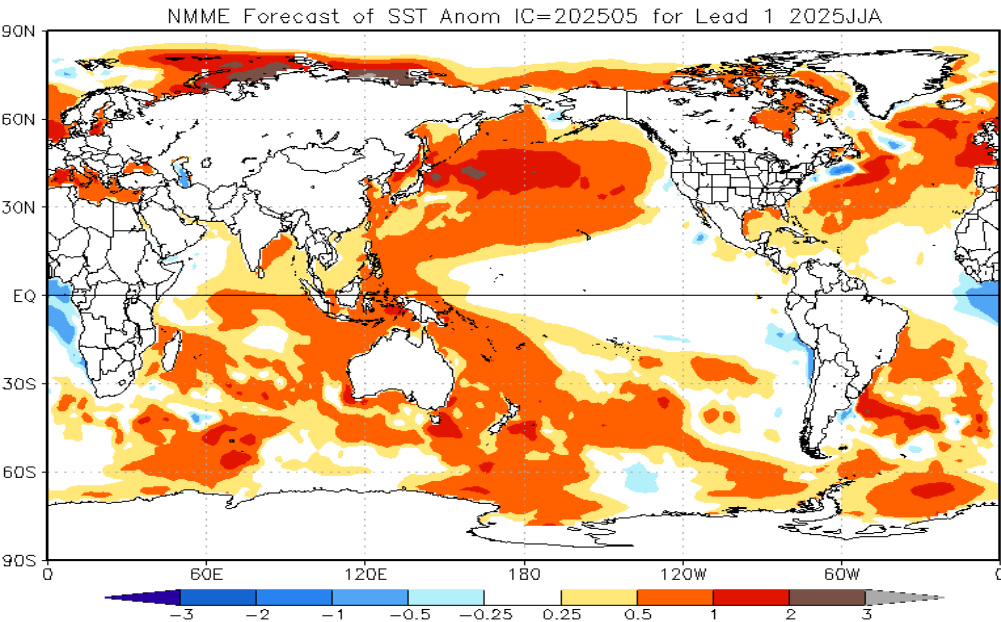
Model run: 26/05/2025
Issued: 28/05/2025

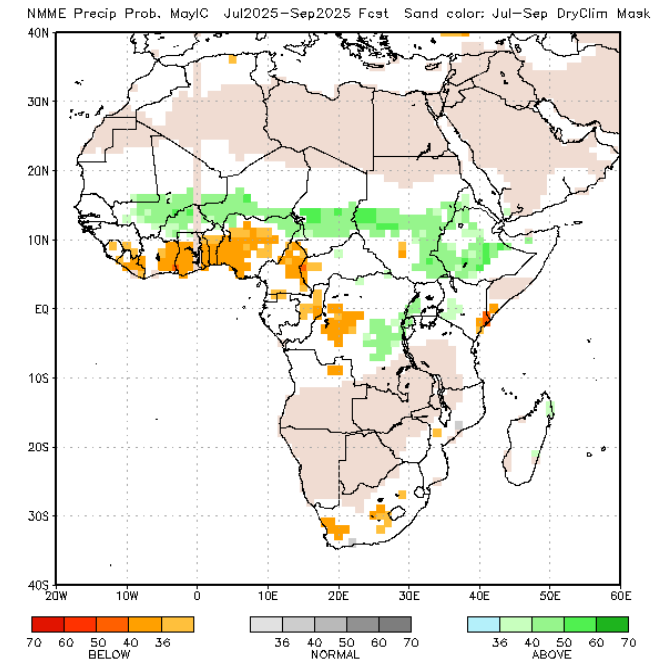
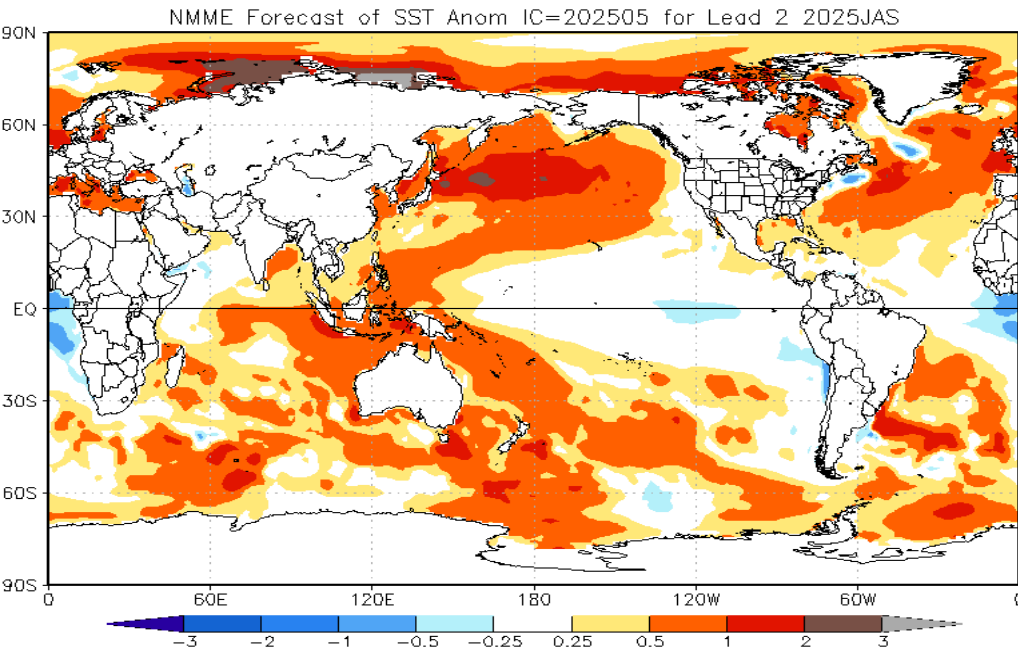
Tercile rainfall probabilities for July to September 2025



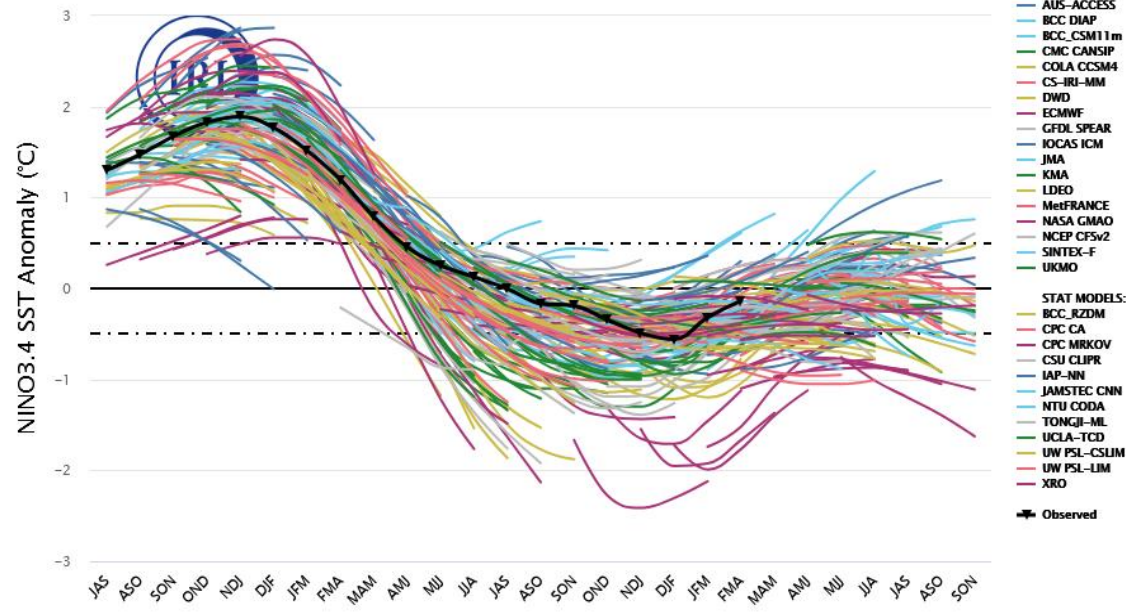
www.bom.gov.au/climate
© Commonwealth of Australia 2025, Australian Bureau of Meteorology

Model: ACCESS-S2
Base period: 1981-2018
Model run: 26/05/2025
Issued: 28/05/2025
Boundaries are not considered authoritative

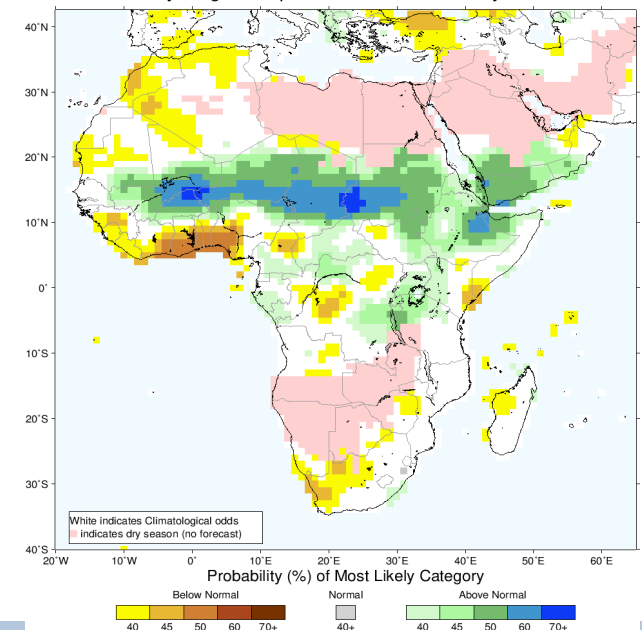


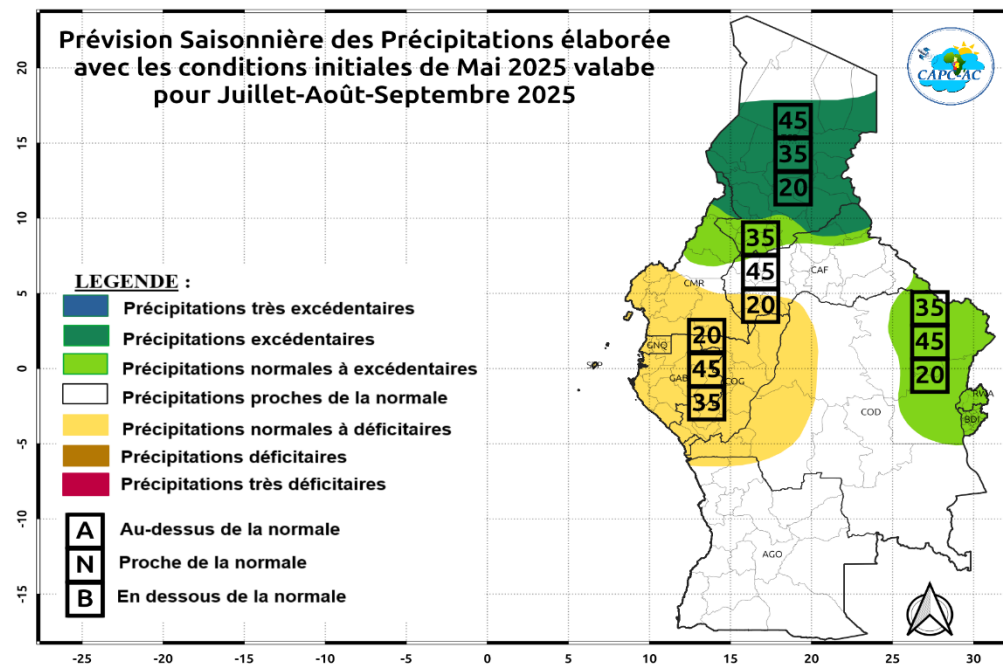
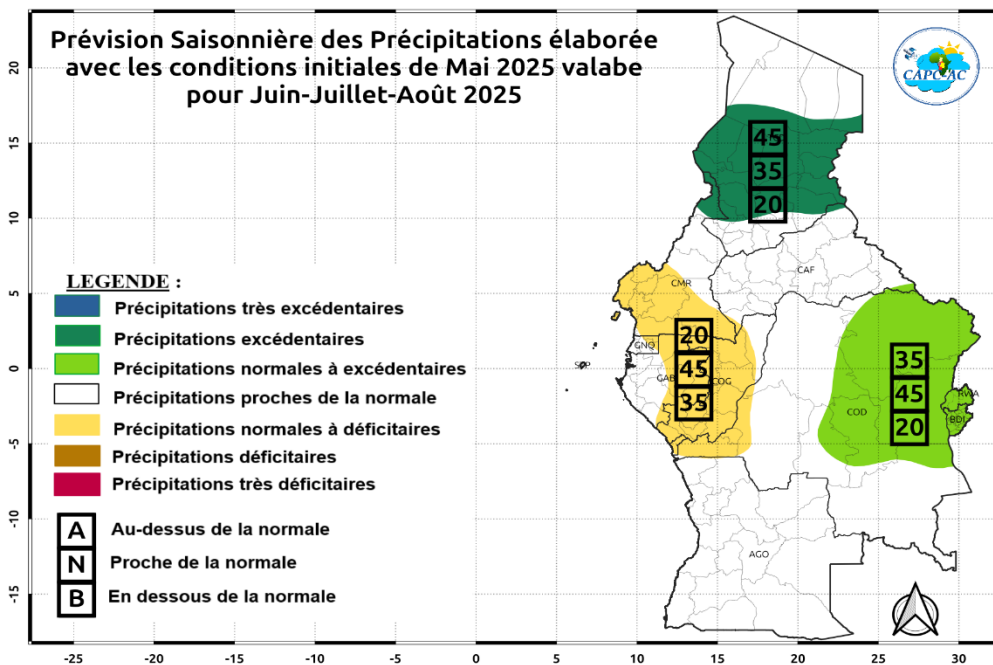


Last 22 seasons of All models ending May 2025

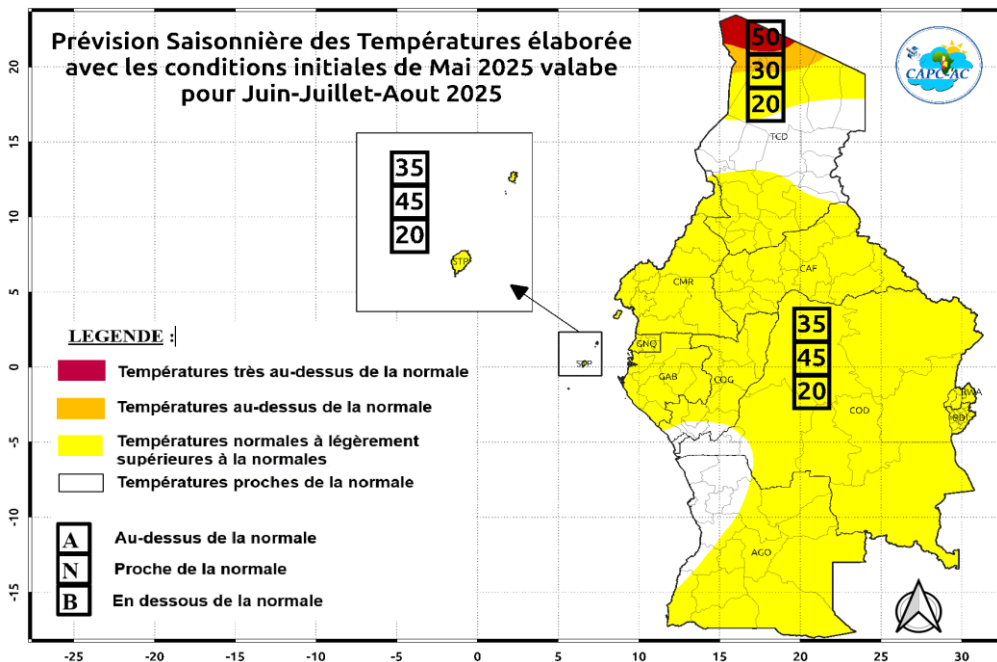


IRI Multi-Model Probability Forecast for Precipitation for July-August-September 2025, Issued May 2025

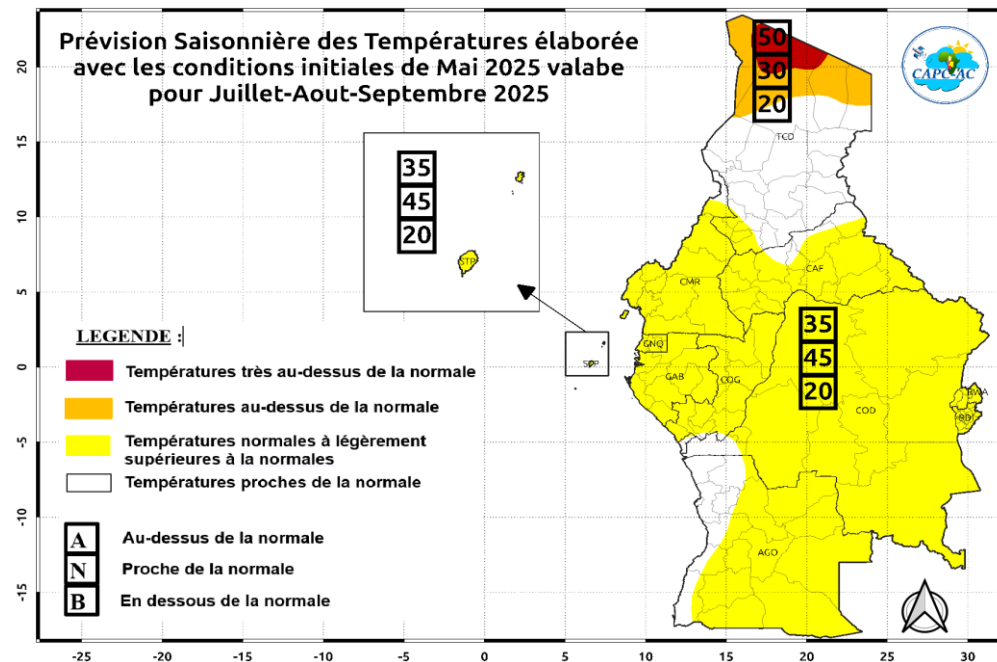




Prévision Saisonnière des Températures élaborée
avec les conditions initiales de Mai 2025 valable
pour Juin-Juillet-Aout 2025



Prévision Saisonnière des Températures élaborée
avec les conditions initiales de Mai 2025 valable
pour Juillet-Aout-Septembre 2025





Centre d'Application et de Prévision Climatologique de l'Afrique Centrale



Merci Pour votre Attention

Remerciements : -----

