



ANGOLA CLIMATE OUTLOOK FOR: MAM 2024

- **INAMET**, National Met Service of Angola.
 - Email: geral@inamet.gov.ao

- Climate Expert: Msc, Isildo Gomes

March 6, 2024

CONTENT

1- Trend climate

2- ANALOGUES YEARS 2016 AND 2019

3- COMPOSIT SST DRY YEAR AND WET YEAR

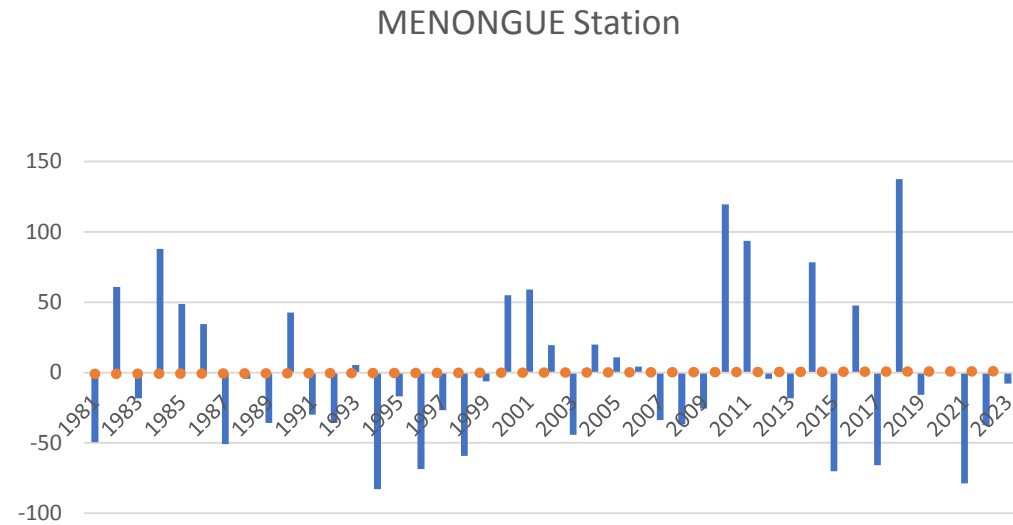
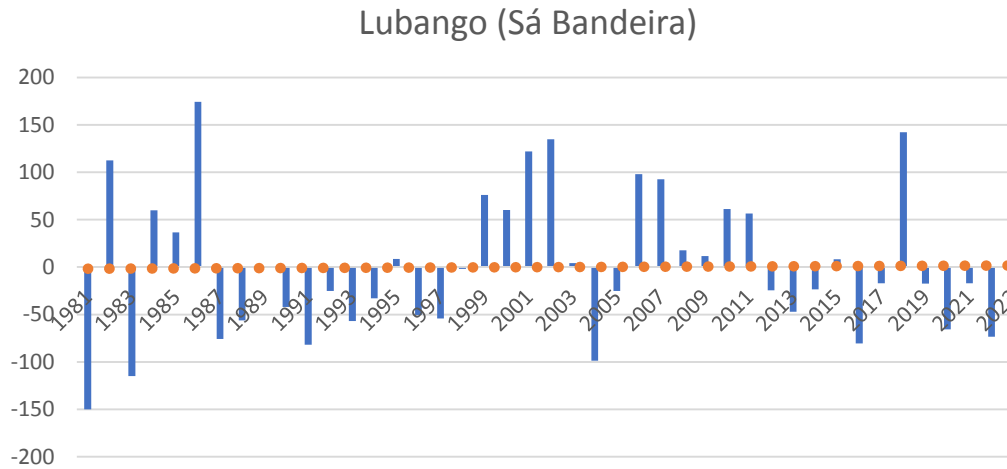
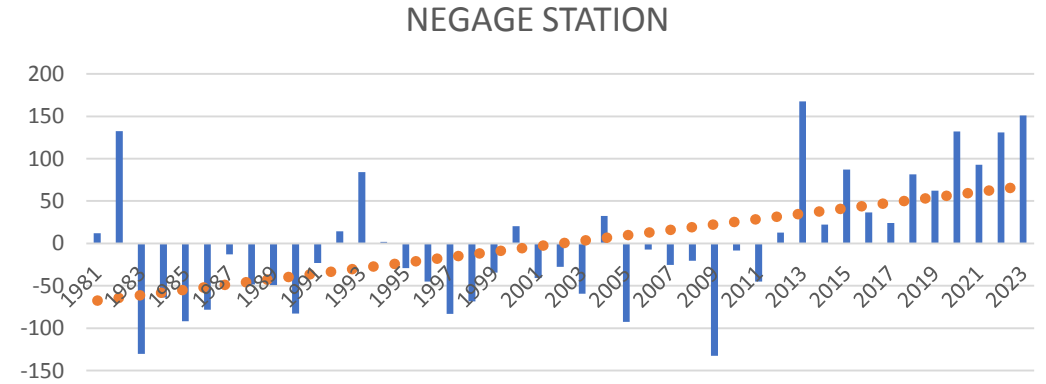
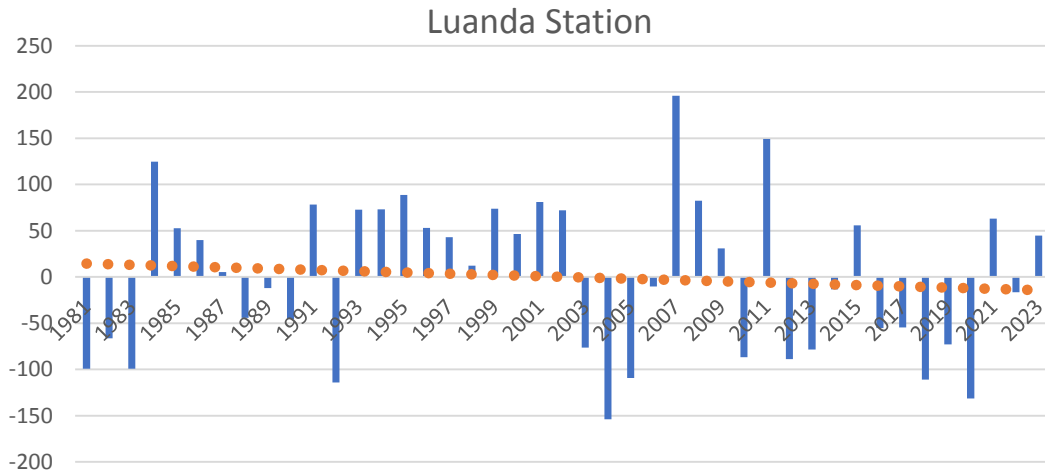
3.1- SST FROM THE DRY YEARS AND WET YEARS

4- CPT OUTLOOK

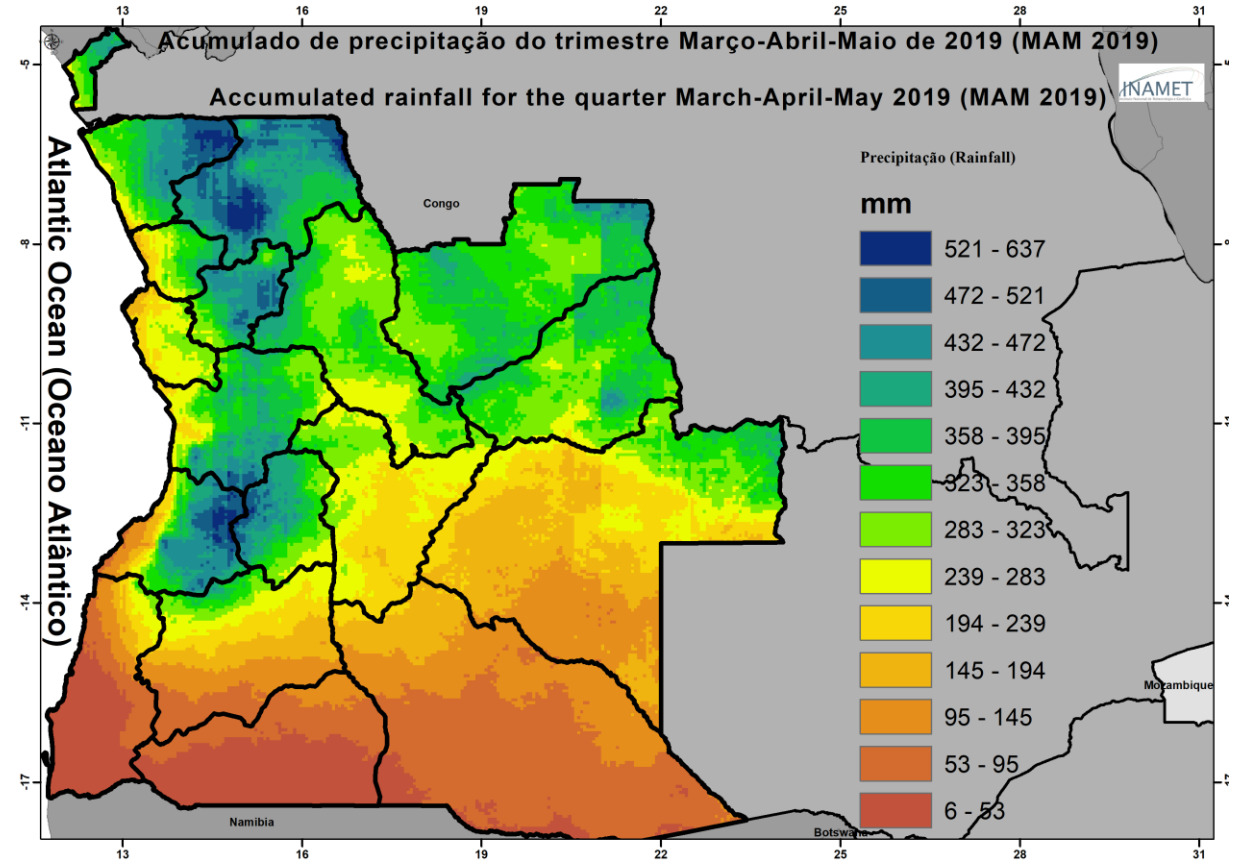
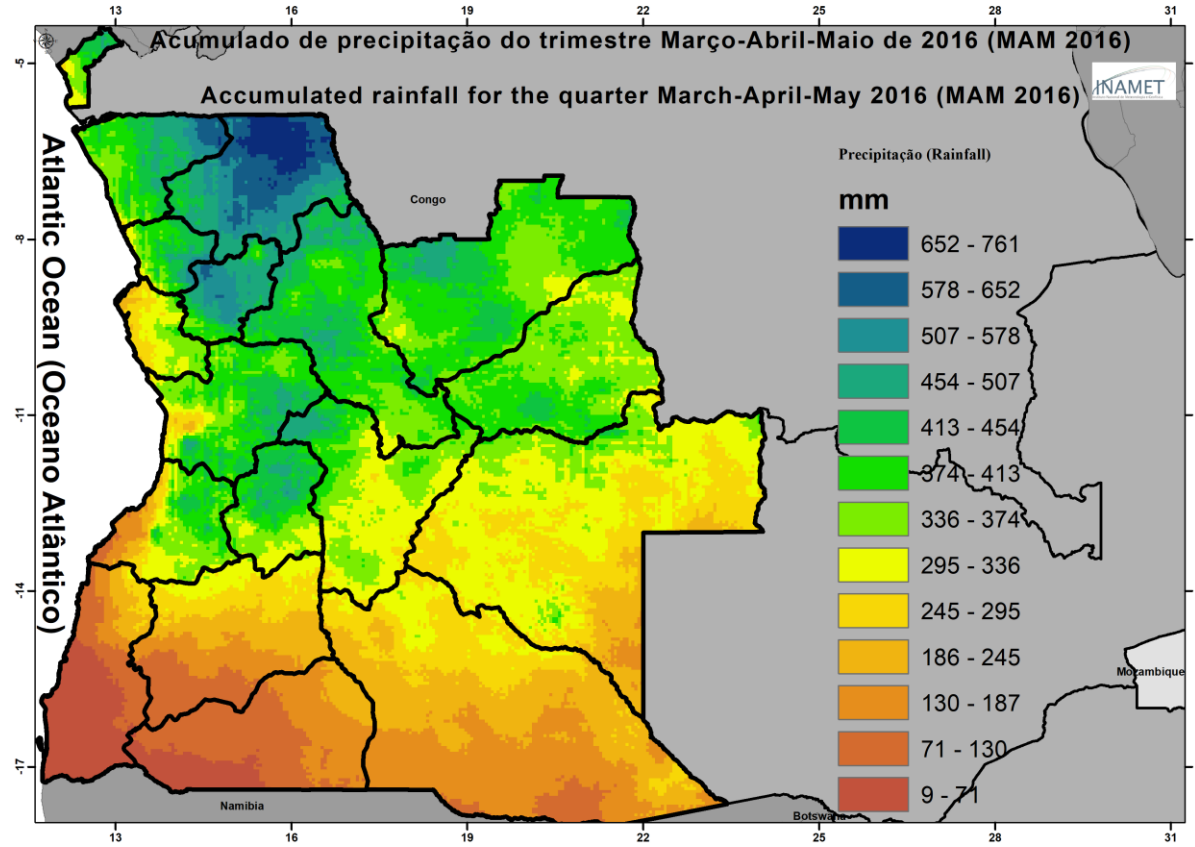
4.1- FORECAST MAM 2024 FROM CFT AND CPT

5- CONSENSO FORECAST MAM 2024

Trend climate



ANALOGUES YEARS 2016 AND 2019



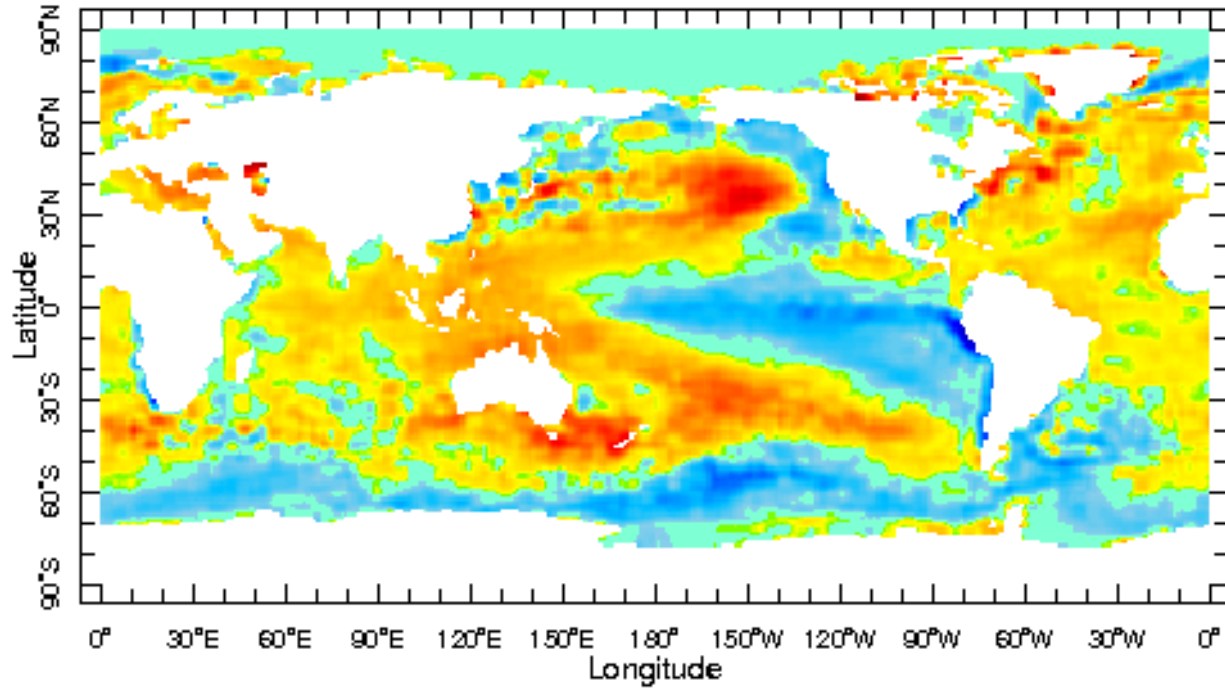
COMPOSIT SST DRY YEAR AND WET YEAR

STATIONS	Lat	Lon	VALUES	1981	1982	1983	1984	1985	1986	1987	1988	1989	1990	1991	1992	1993	1994	1995	1996	1997
Luanda	-8,85	13,233	RR%	57	71	57	154	123	117	102	81	95	80	134	51	132	132	138	123	119
WAKU KUNGU (CELA)	-11,417	15,117	RR%	65	118	79	91	128	124	112	97	107	107	99	84	113	117	128	87	103
LUBANGO (SA DA BAND	-14,933	13,567	RR%	38	146	53	125	115	172	69	77	100	83	66	90	77	86	104	79	78
MENONGUE (SERPA PINTO)	-14,65	17,683	RR%	79	126	92	137	120	114	79	98	85	118	87	85	102	65	93	71	89
MOÇAMEDES	-15,2	12,15	RR%	44	141	47	142	113	130	95	80	141	79	58	51	97	59	135	70	73
MAVINGA	-15,833	20,35	RR%	105	88	59	116	97	107	48	99	86	76	85	76	97	36	60	70	119
NOQUI	-5,86667	13,43333	RR%	112	85	104	103	86	100	93	121	75	103	102	108	91	107	116	116	116
NBANZA-KONGO	-6,26667	14,25	RR%	105	96	95	99	102	94	114	107	118	101	109	120	130	115	104	103	71
MAQUELA_DO_ZOMBO	-6,03333	15,11667	RR%	119	86	108	113	98	116	109	106	113	85	143	133	107	97	118	103	95
N,ZETO_(AMBRIZETE)	-7,23333	12,86667	RR%	94	120	62	104	107	123	121	110	95	137	94	94	97	61	32	52	80
TOTO	-7,16667	14,26667	RR%	94	116	99	119	107	107	100	110	98	107	107	84	97	60	61	83	80
CARMONA	-7,58333	15	RR%	105	109	128	117	133	106	110	112	99	104	80	83	106	96	116	120	123
NEGAGE	-7,68333	15,36667	RR%	91	122	114	103	112	99	112	86	104	119	114	98	118	125	118	112	111
DUNDO	-7,4	20,81667	RR%	103	131	69	85	79	82	97	89	89	81	95	103	120	100	93	89	81
N,DALATANDO	-9,28333	14,91667	RR%	120	120	115	108	109	112	121	56	73	96	99	124	125	112	99	128	86
CAMAXILO	-8,36667	18,93333	RR%	122	148	112	104	113	113	119	97	110	127	119	112	134	107	137	119	86
SUMBE	-11,2	13,85	RR%	109	93	108	164	55	32	68	108	94	92	104	52	114	36	83	68	138
NAIL	-9,1175	13,4983	RR%	113	117	131	120	47	37	49	87	152	128	104	58	131	63	66	81	113
MALANGE	-9,55	16,36667	RR%	97	88	104	122	81	91	121	105	104	113	96	124	107	82	121	116	115
CHIPINDO	-13,8314	15,80111	RR%	92	89	111	105	92	70	95	117	87	92	54	141	115	67	94	90	47
SAURIMO_(HENRIQUE_DE_C	-9,65	20,4	RR%	82	91	112	116	100	107	112	114	110	125	110	114	115	88	99	137	126
PORTO_AMBOIM	-10,7	13,75	RR%	110	97	133	162	57	29	60	109	95	92	131	55	130	56	75	50	116
KAMENONGUE	-11,4467	20,16777	RR%	107	138	166	146	152	139	113	151	116	132	110	154	173	120	114	188	158
VIREI	-15,7269	12,95166	RR%	108	115	109	148	52	28	48	113	93	104	70	79	118	70	44	68	83
LUENA_(LUSO)	-11,7833	19,91667	RR%	96	114	117	94	109	112	81	102	82	96	87	127	122	87	72	122	105
CAZOMBO	-11,8667	22,9	RR%	100	85	118	81	115	121	102	101	98	103	98	116	129	74	114	233	151
LOBITO	-12,3667	13,53333	RR%	153	150	170	191	47	45	96	134	138	140	81	94	94	42	102	111	158
MONBACA_(BENGUELA)	-12,5833	13,41667	RR%	62	69	92	97	22	22	41	63	64	70	36	45	48	21	33	45	61
HUAMBO_(NOVA_LISBOA)	-12,8	15,75	RR%	119	112	95	103	120	89	116	85	148	116	65	122	132	92	117	53	131
BIE_(SILVA_PORTO)	-12,3833	16,95	RR%	169	189	182	173	192	136	199	156	236	171	134	164	203	164	244	97	240

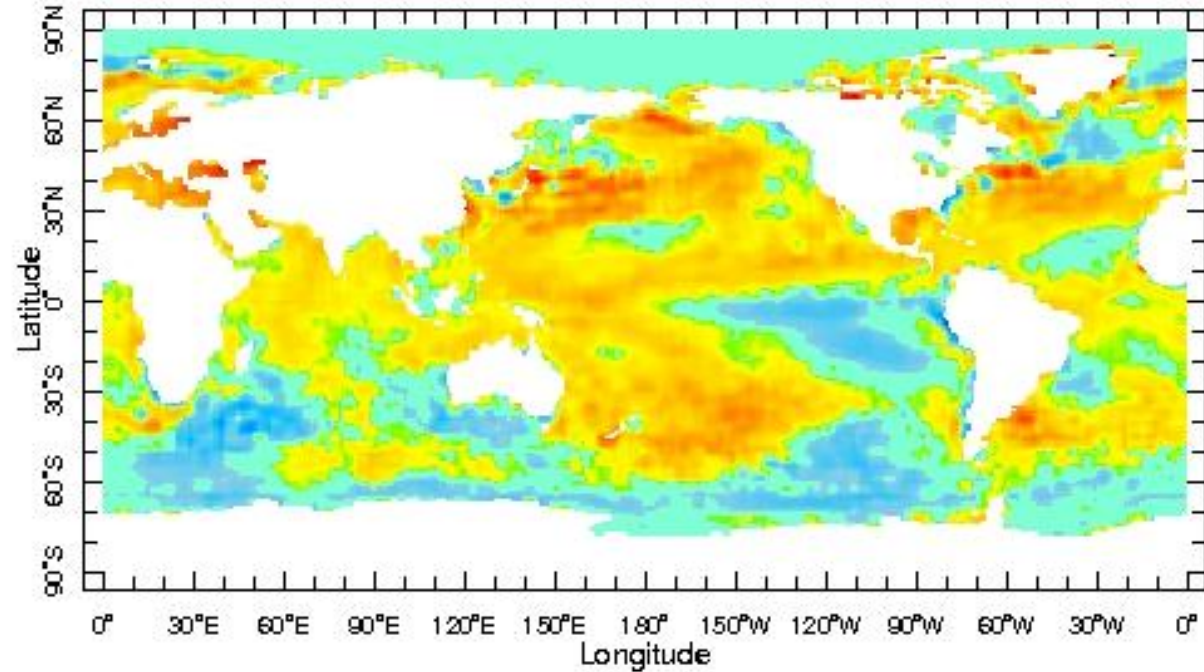
DRY YEARS : 1988; 1993; 2000; 2002; 2006; 2011; 2013; 2022

WET YEARS : 1987; 1990; 2018; 2020

SST FROM THE DRY YEARS AND WET YEARS

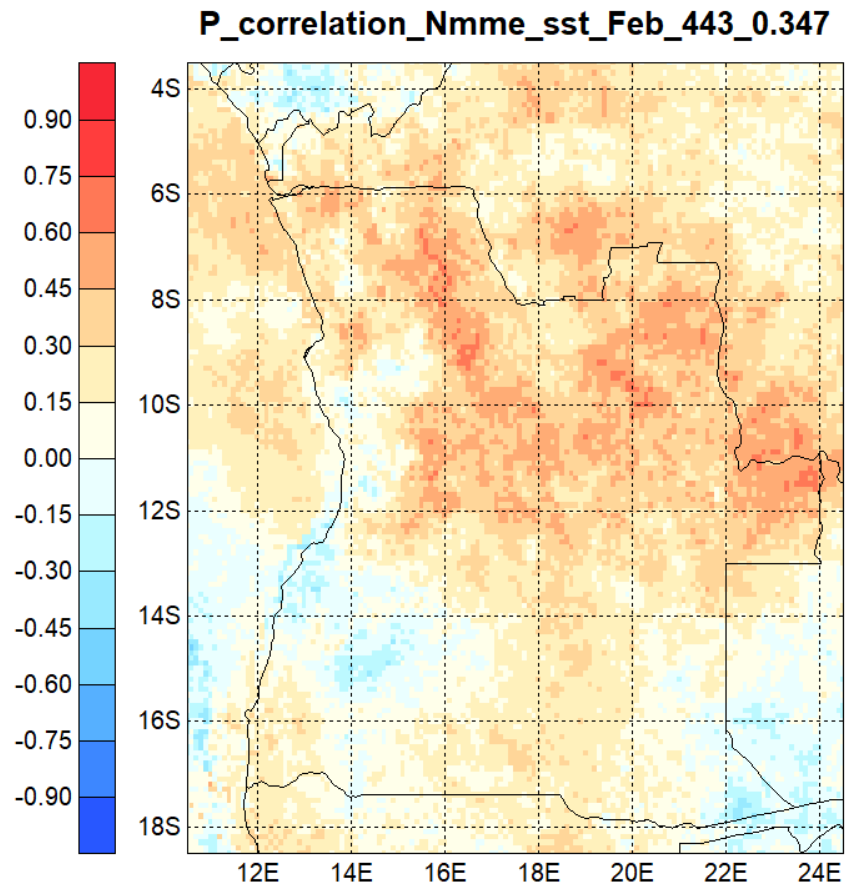
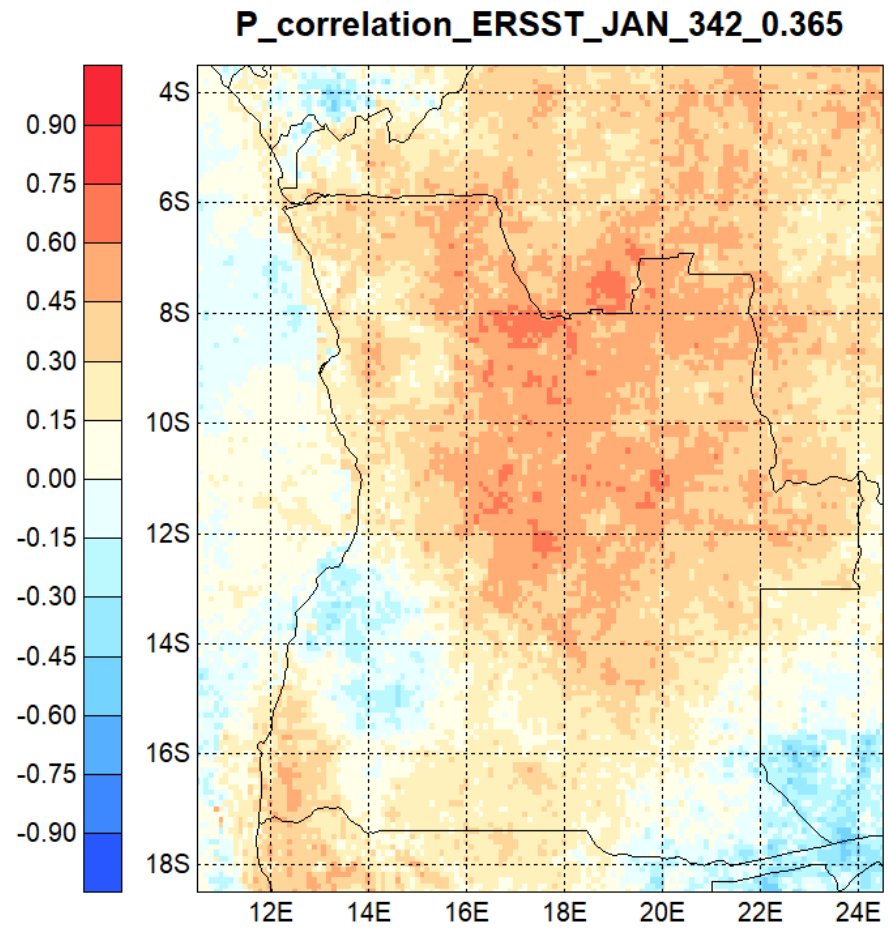


SST DRY YEARS



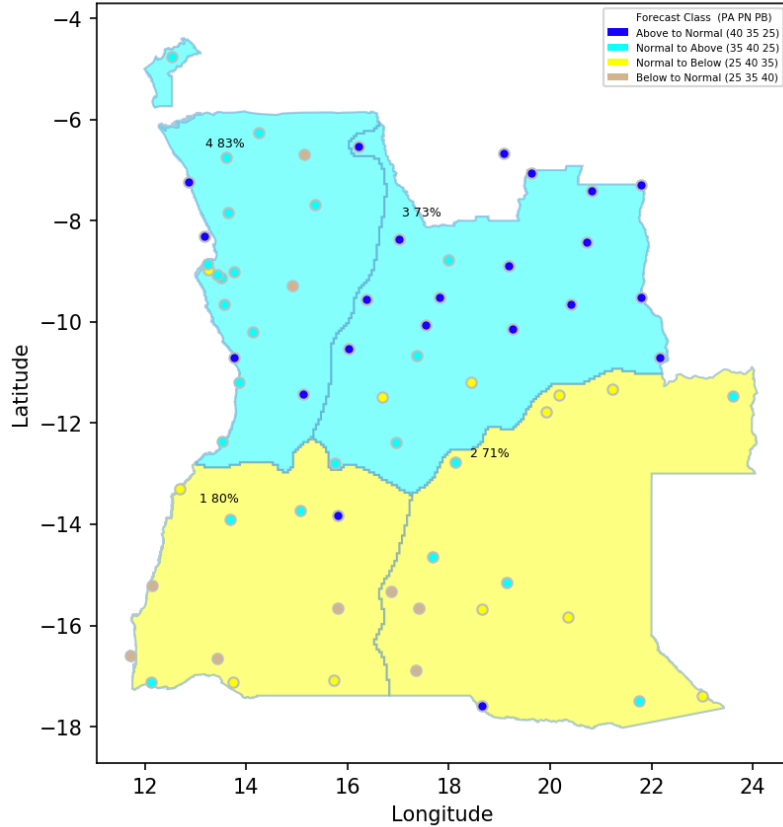
SST WET YEARS

CPT OUTLOOK

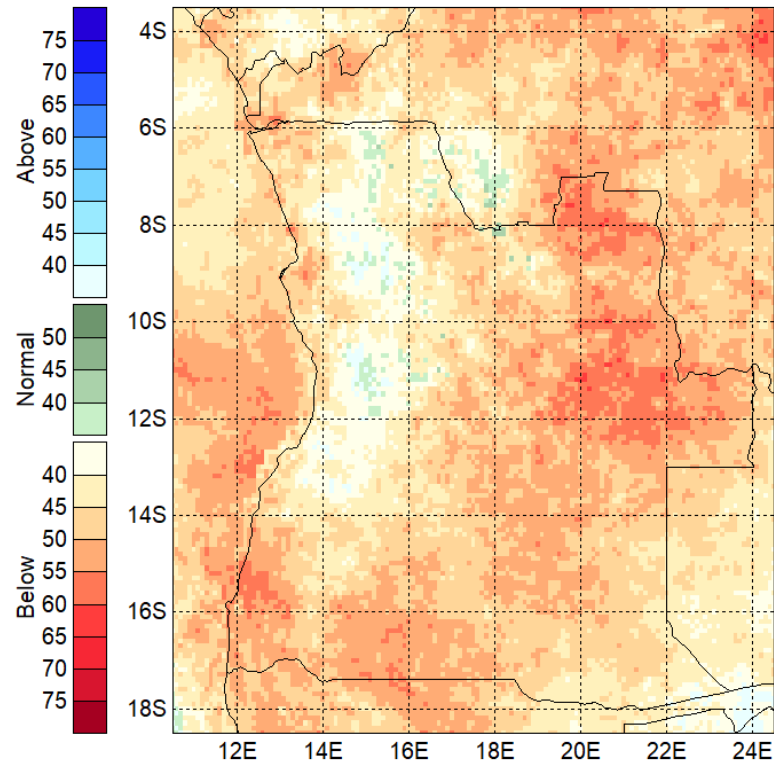


FORECAST MAM 2024 FROM CFT AND CPT

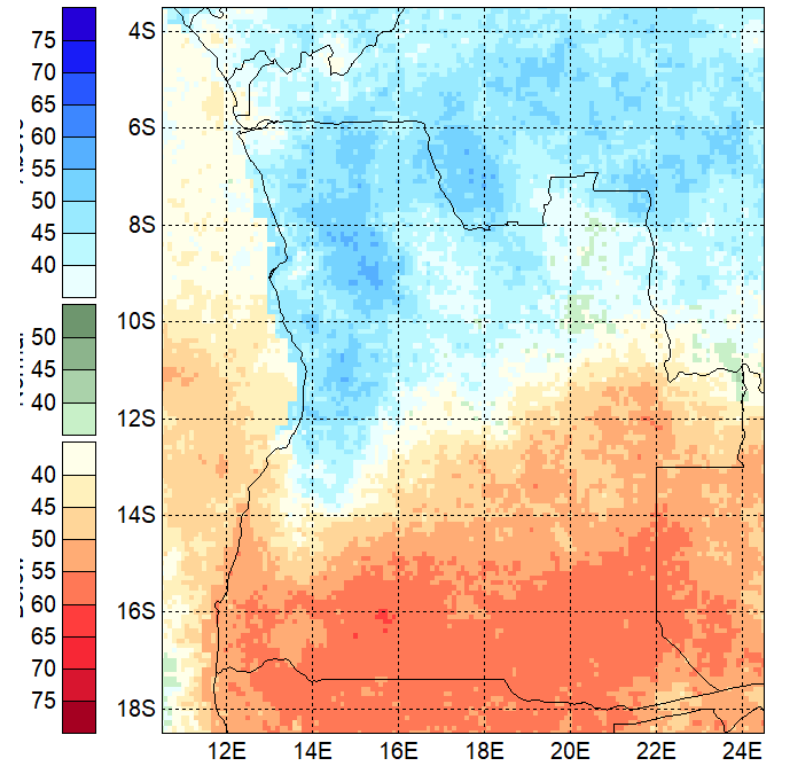
2024MAM Forecast



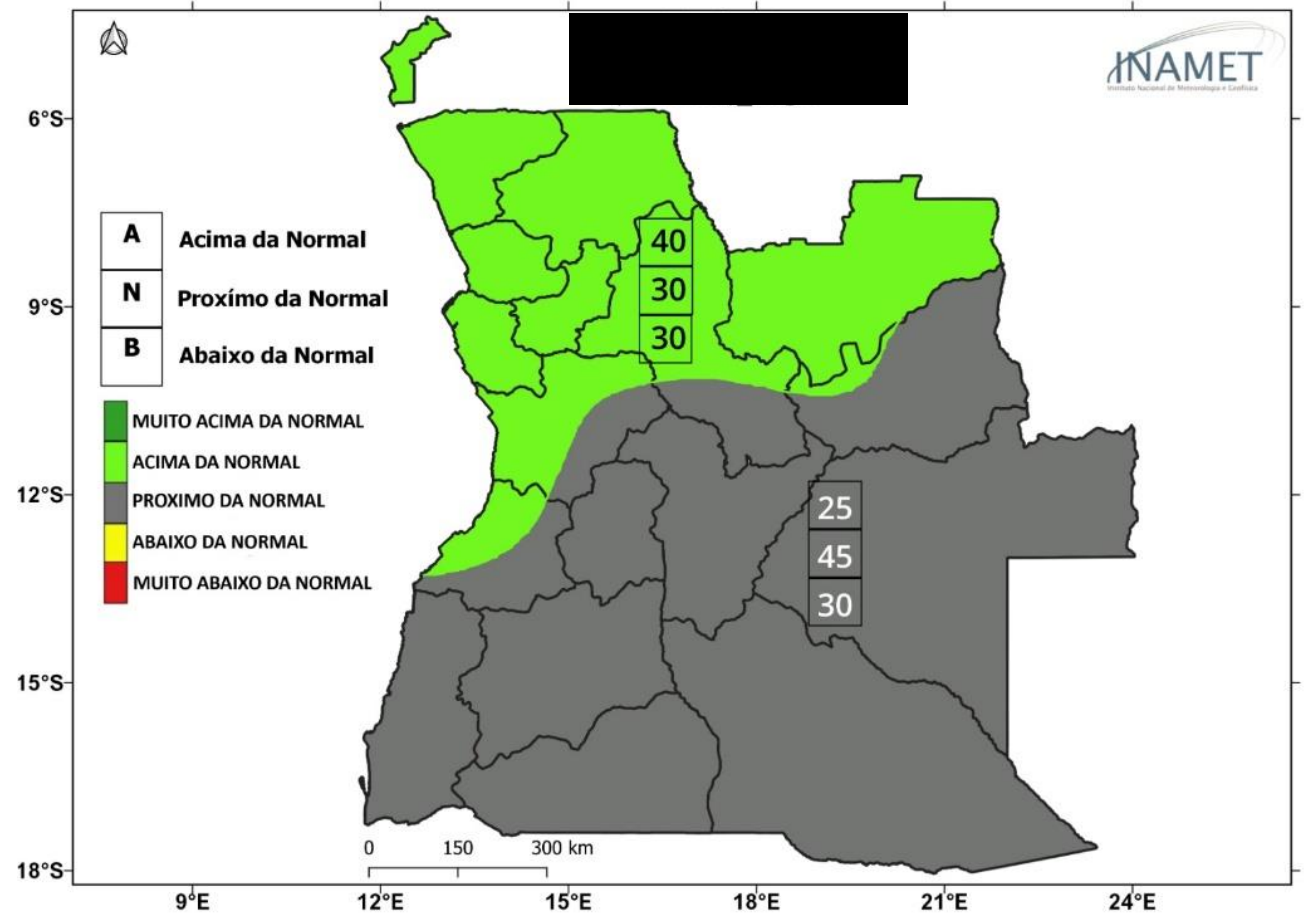
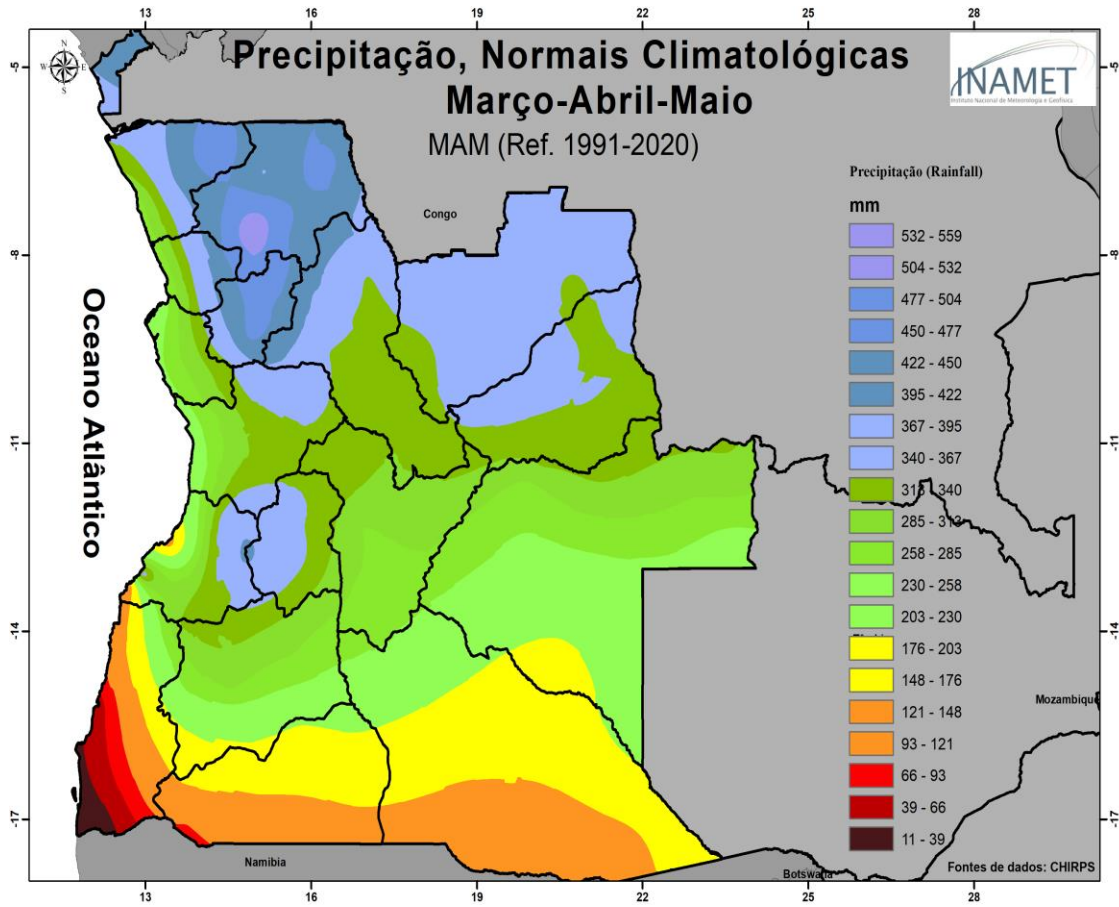
Prob_FCST_ERSST_JAN_342_0.365



Prob_FCST_Nmme_sst_Feb_443_0.347



CONSENSO FORECAST MAM 2024



Thank You

Merci

Obrigado

Asante