



# **Update on State of Regional Climate for the SADC Region**

## **ACCOF - 19**

**Mr. Sunshine Mduduzi Gamedze**  
**Climate and Seasonal Forecaster**  
**SADC Climate Services Centre**



# Outline

## **Performance of regional rainfall**

## **Drivers of regional climate**

1. **El Nino Southern Oscillation (ENSO) status and its forecast**
2. **Indian Ocean Dipole (IOD) status and its forecast**

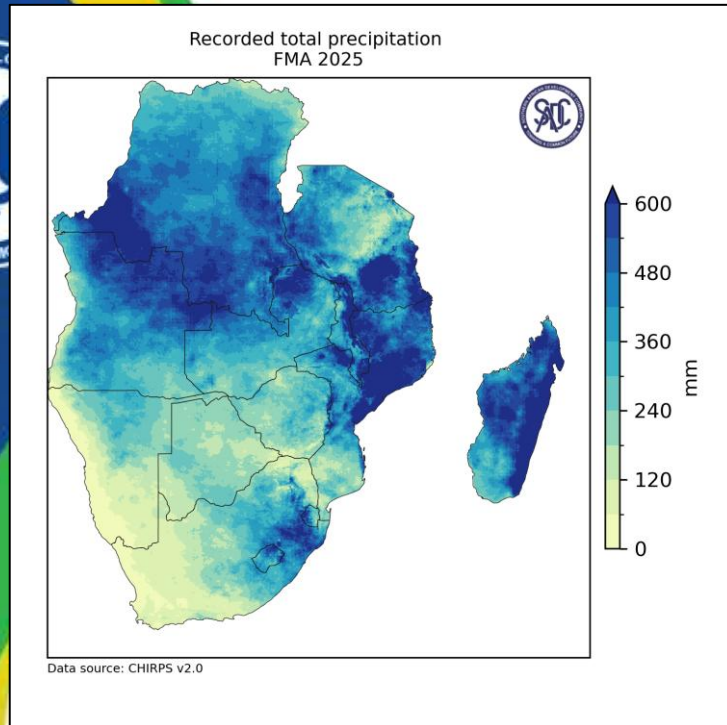
## **GPCs rainfall forecast for JJA 2025 season**

## **SADC Regional Seasonal Climate Outlook for JJA 2025 Season**

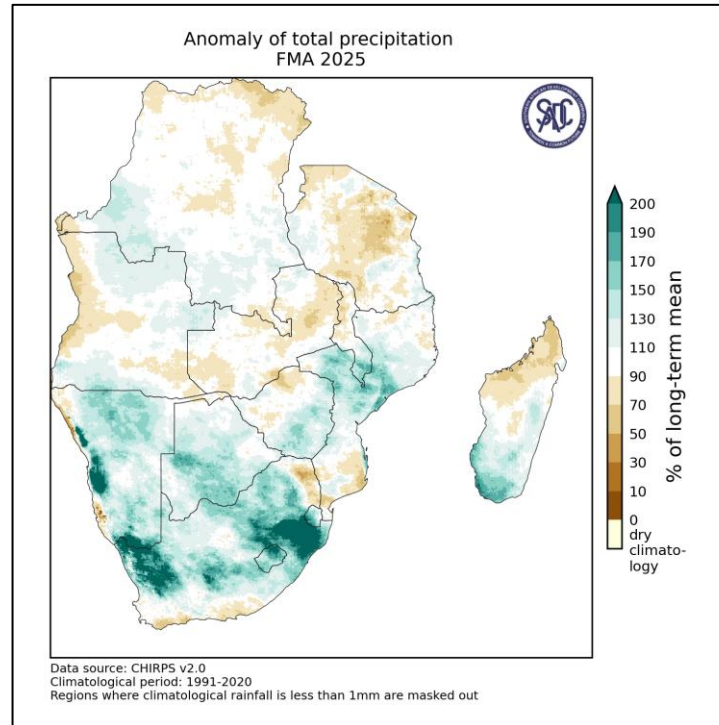


# RAINFALL PERFORMANCE OVER SADC REGION

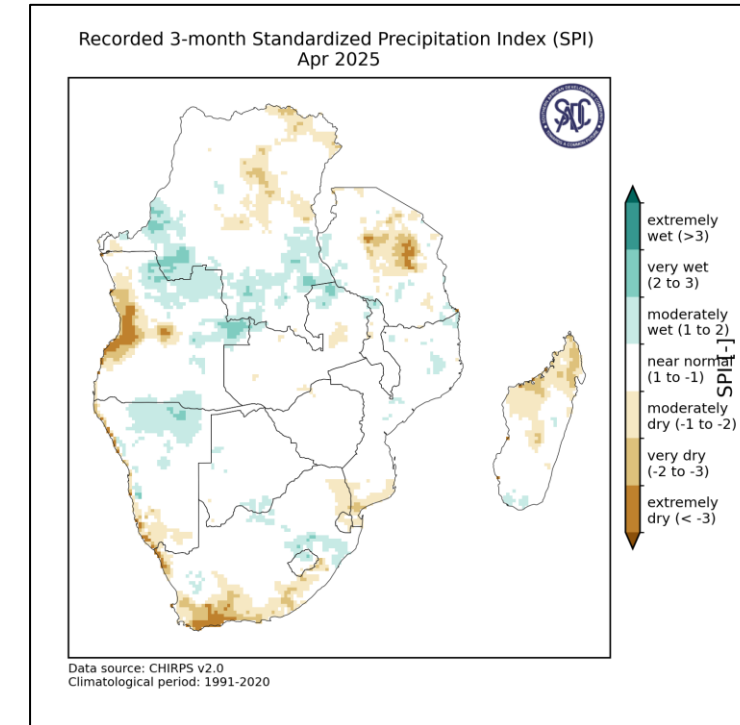
## Obs: Past 3-months



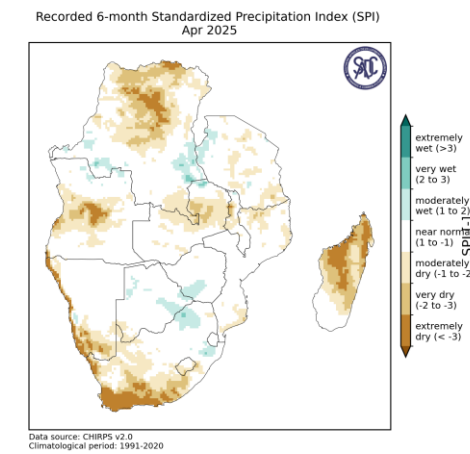
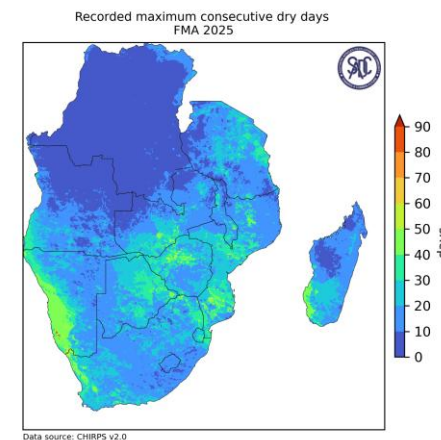
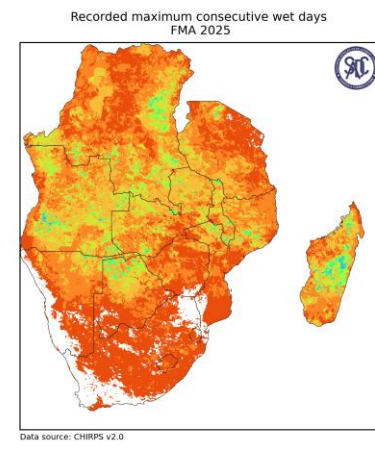
## Anomaly: Past 3-months



## SPI – 3: Past 3-months



Central to northeastern parts of the region continued to record above average rainfall during the FMA 2025 season





## Drivers of the regional climate



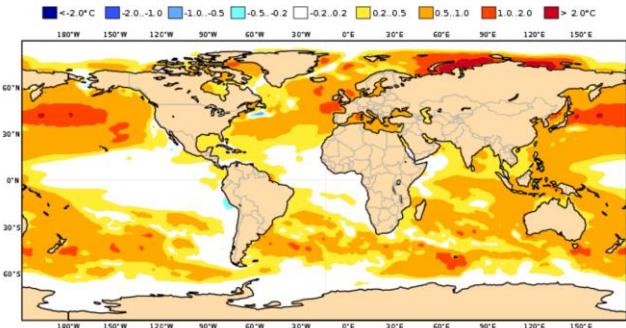


# STATE OF CLIMATE DRIVERS – FORECASTED SSTs

C3S

C3S multi-system seasonal forecast ECMWF/Met Office/Météo-France/CMCC/DWD/NCEP/JMA/ECCC/BOM  
Mean forecast SST anomaly JJA 2025

Nominal forecast start: 01/05/25  
Variance-standardized mean



PROGRAMME OF THE EUROPEAN UNION



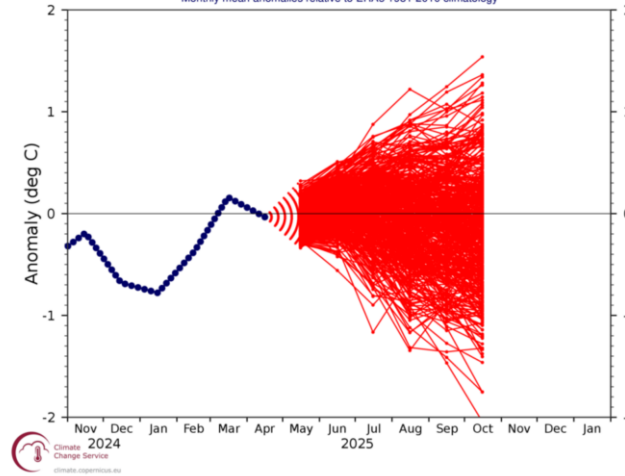
CLIMATE COOPERATION



NINO3.4 SST anomaly plume

C3S multi-system forecast from 1 May 2025

ECMWF, Met Office, Météo-France, CMCC, DWD, NCEP, JMA, ECCC, BOM  
Monthly mean anomalies relative to ERA5 1981-2010 climatology



PROGRAMME OF THE EUROPEAN UNION



CLIMATE COOPERATION



ENSO is currently neutral and is projected to remain in neutral conditions in the next coming three months – JJA 2025.

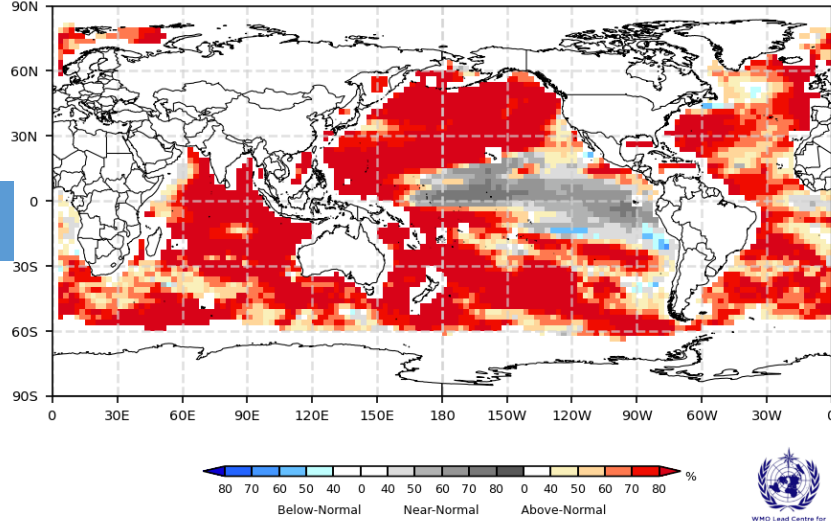
WMO

Probabilistic Multi-Model Ensemble Forecast

CMCC, ECMWF, Exeter, Melbourne, Montreal, Offenbach, Seoul, Tokyo, Toulouse, Washington

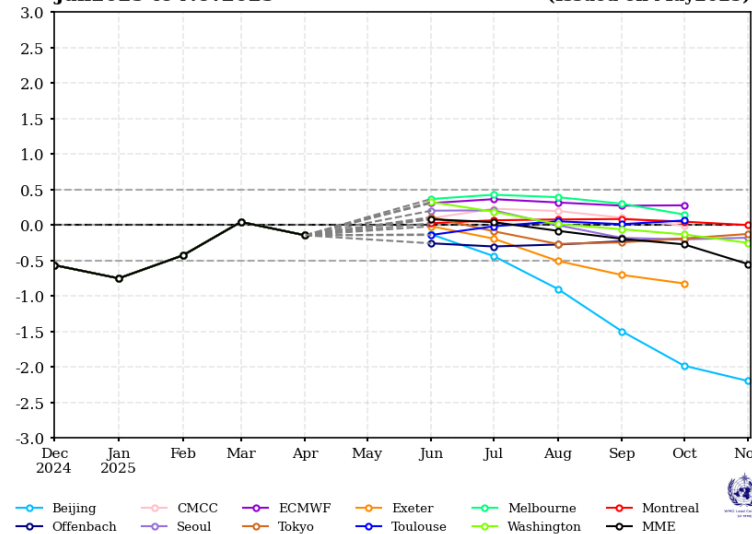
Sea Surface Temperature : JJA2025

(issued on May2025)

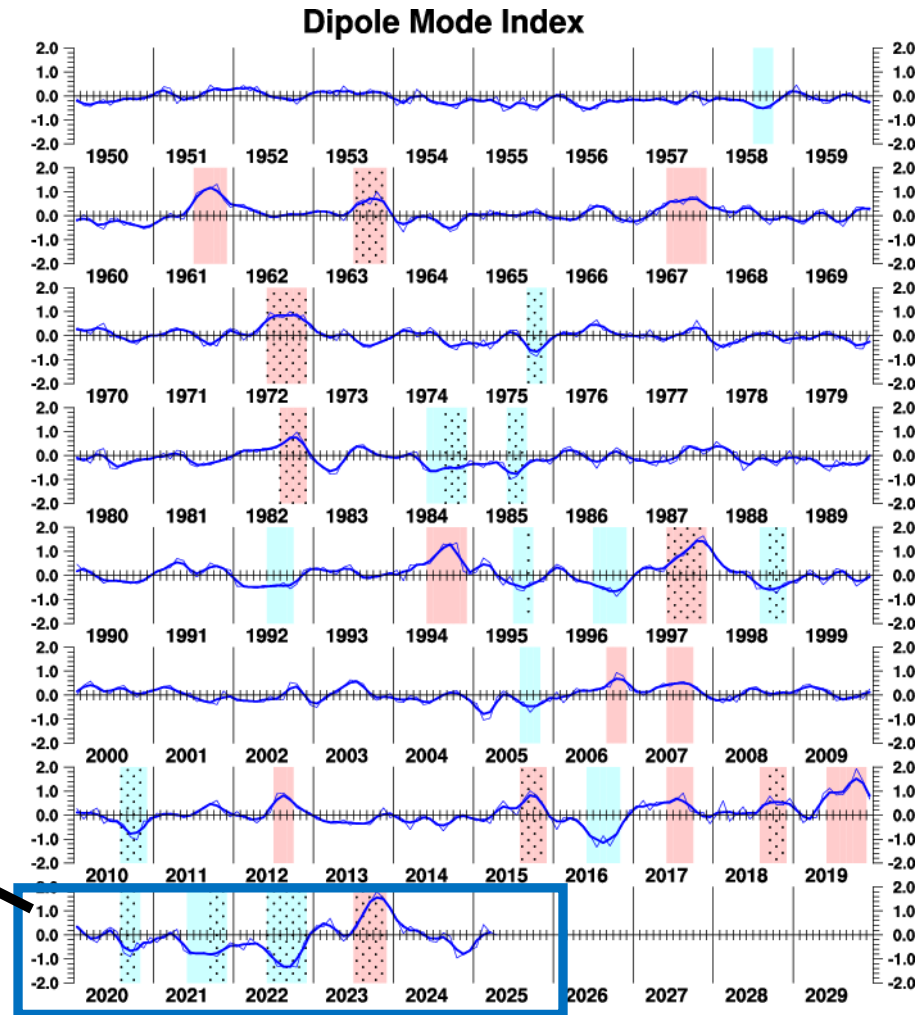
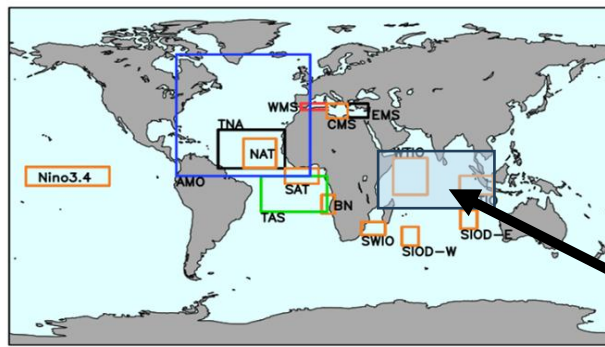


Forecast of Nino3.4  
Jun2025 to Nov2025

(Issued on May2025)

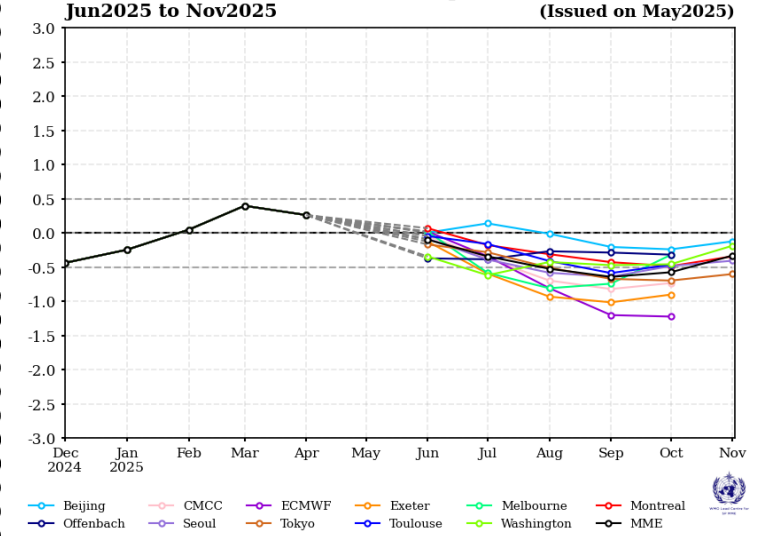


# Observed evolution of IOD and Forecast

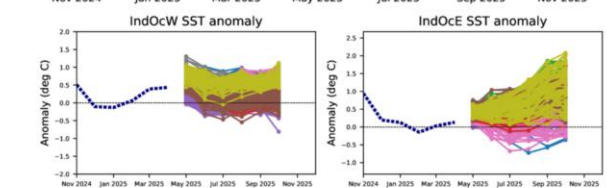
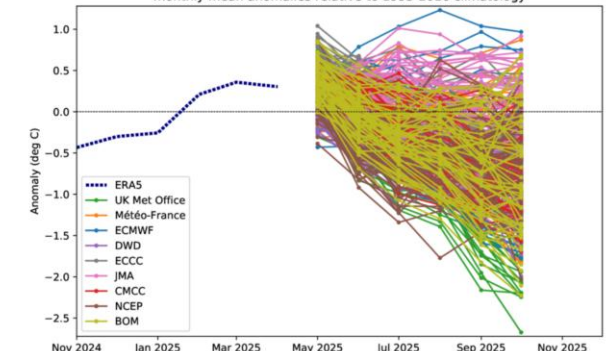


[https://ds.data.jma.go.jp/tcc/tcc/products/el\\_nino/iodevents.html](https://ds.data.jma.go.jp/tcc/tcc/products/el_nino/iodevents.html)

Forecast of DMI (the Indian Ocean Dipole Mode Index)  
Jun2025 to Nov2025  
(Issued on May2025)



IOD (IndOciW-IndOciE) anomaly  
C3S: Multi-system forecast from 1 May 2025  
monthly mean anomalies relative to 1993-2016 climatology



IOD - is in neutral phase currently but is likely to be in a negative phase in the next months.



PROGRAMME OF  
THE EUROPEAN UNION

Copernicus  
Europe's eyes on Earth

Climate Service  
climate.ecmwf.eu

EUROPEAN COMMISSION  
ECMWF

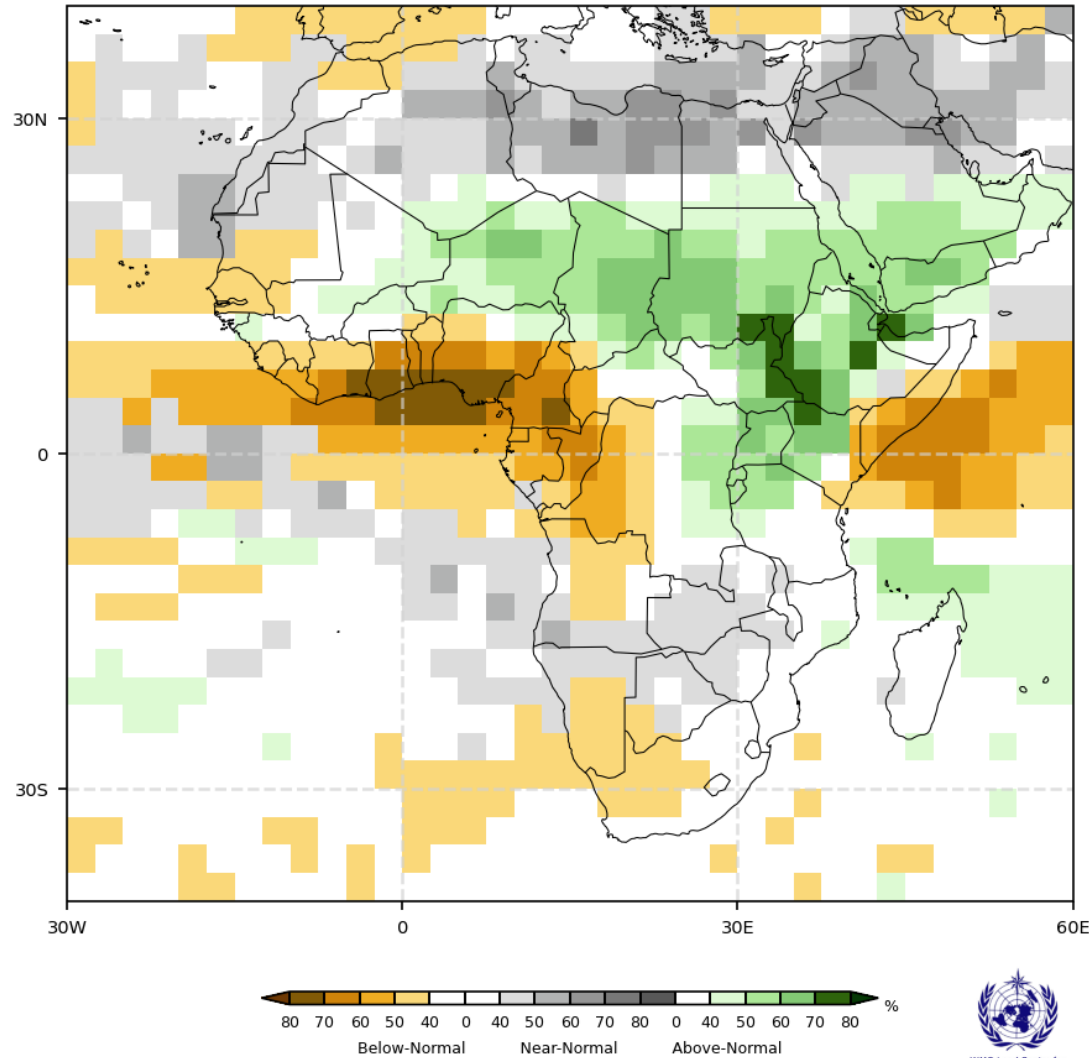
# GLOBAL FORECASTED STATE OF CLIMATE – PRECIPITATION FOR NDJ 2024/2025

## Probabilistic Multi-Model Ensemble Forecast

CMCC, CPTEC, ECMWF, Exeter, Melbourne, Montreal, Offenbach, Seoul, Tokyo, Toulouse, Washington

### Precipitation : JAS2025

(issued on May2025)



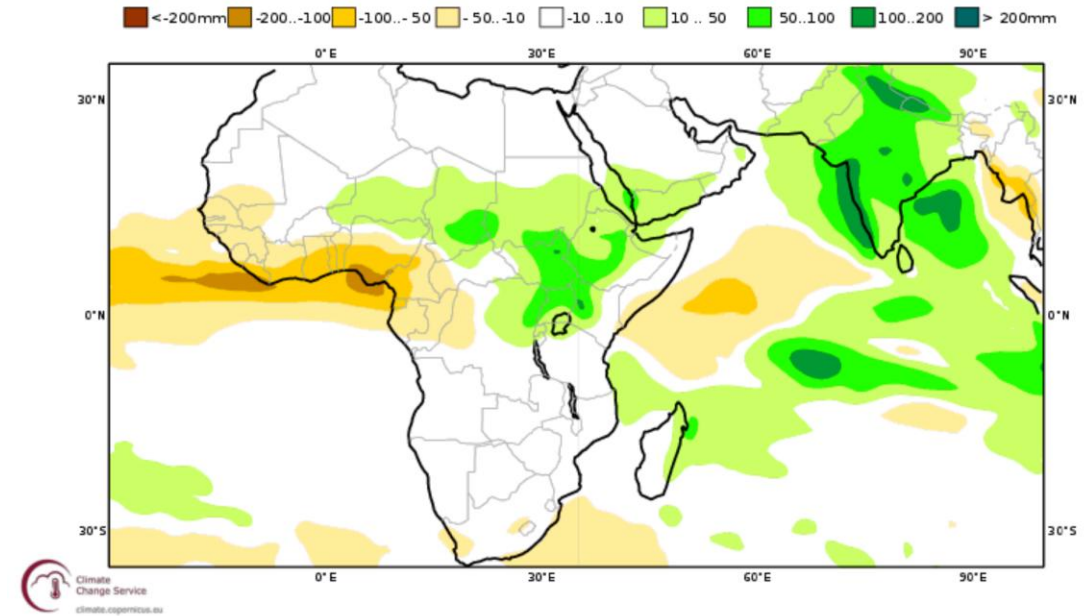
C3S multi-system seasonal forecast ECMWF/Met Office/Météo-France/CMCC/DWD/NCEP/JMA/ECCC/BOM

### Mean precipitation anomaly

Nominal forecast start: 01/05/25

Variance-standardized mean

JJA 2025



PROGRAMME OF  
THE EUROPEAN UNION







## Outlooks of the regional climate

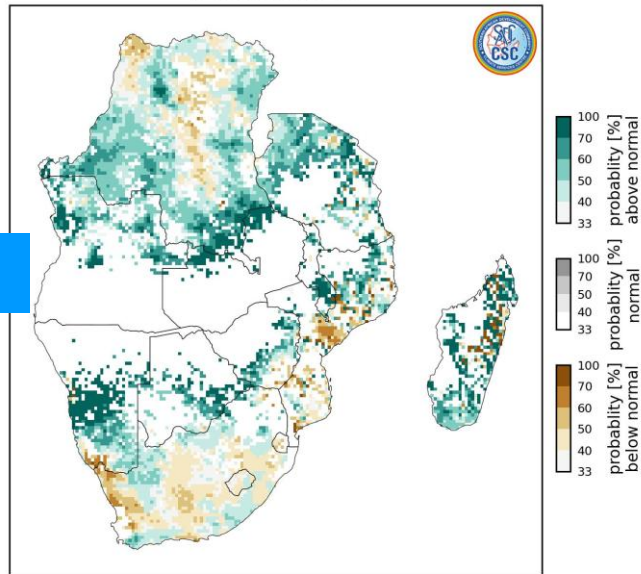




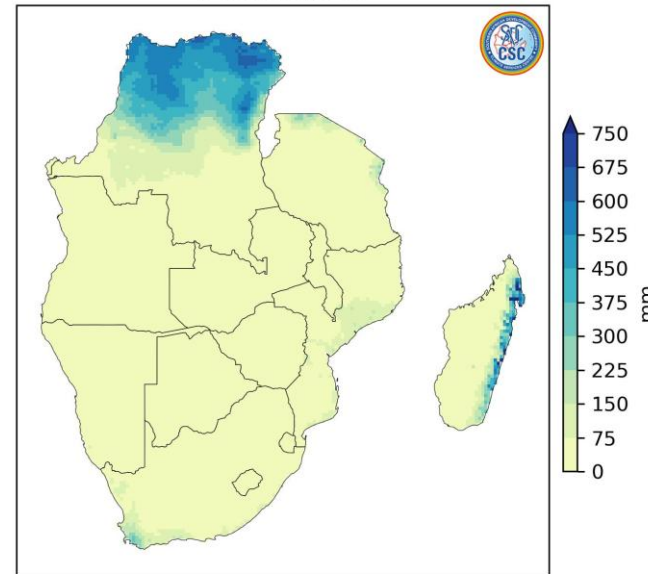
# SADC DYNAMICAL MODEL FORECASTED STATE OF CLIMATE – PRECIPITATION & TEMPERATURES

Precip.

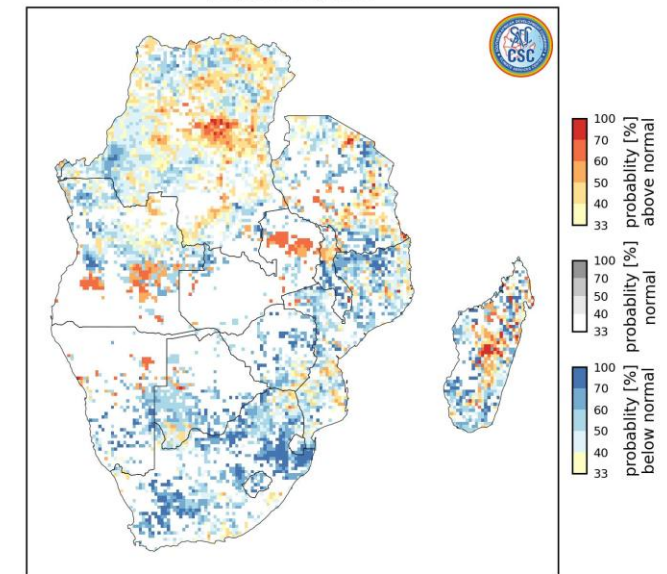
Probabilistic (tercile) forecast  
of rainfall for JJA 2025  
issued in May 2025



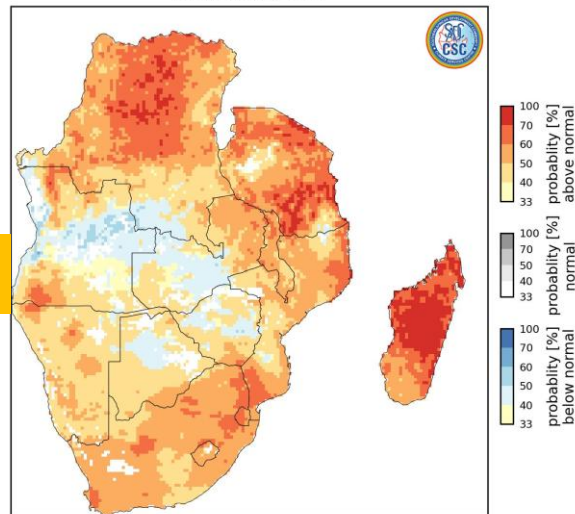
Deterministic forecast  
of rainfall in JJA 2025  
issued in May 2025



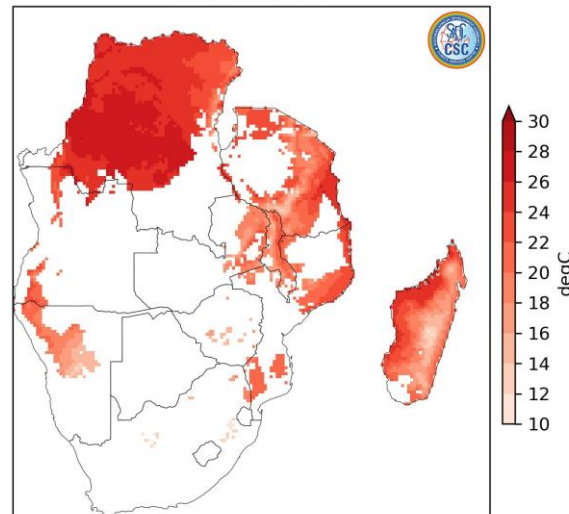
Probabilistic (tercile) forecast  
of consecutive dry days for JJA 2025  
issued in May 2025



Probabilistic (tercile) forecast  
of mean temperature for JJA 2025  
issued in May 2025



Deterministic forecast  
of mean temperature in JJA 2025  
issued in May 2025



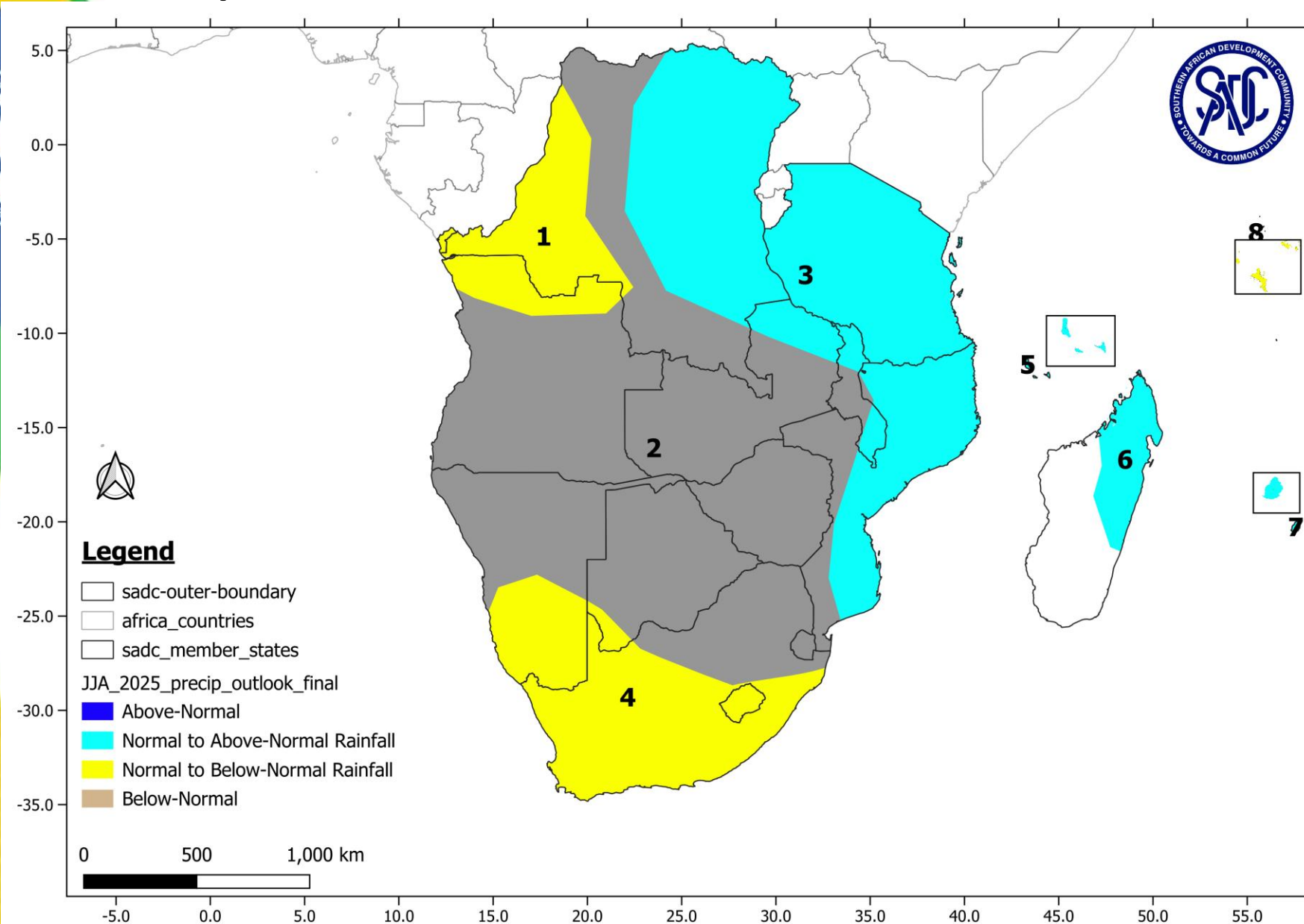
Temp.

Dynamical model outputs indicate a northward movement of the rainfall bearing systems with declining temperatures over most of central parts of the region. More dry conditions are expected over most parts and more so in the western parts.



# JJA 2025 Season Outlook

## Precipitation



Northwestern parts of the SADC region including Seychelles and southwestern parts are expected to receive normal to below normal rainfall, while the rest of the region is expected to receive normal and the east-coastal areas to receive normal-to-above-normal rainfall.





# THANK YOU

