

The logo of the Southern African Development Community (SADC) is located in the top left corner. It is a circular emblem with the text 'SOUTHERN AFRICAN DEVELOPMENT COMMUNITY' around the top and 'TOWARDS A COMMON FUTURE' around the bottom. In the center, the letters 'SADC' are prominently displayed in a stylized font.

# Reflection of Regional Seasonal Climate Outlook for 2023/2024 season

ACCOF-17

**SADC Climate Services Centre**  
**SADC Secretariat**



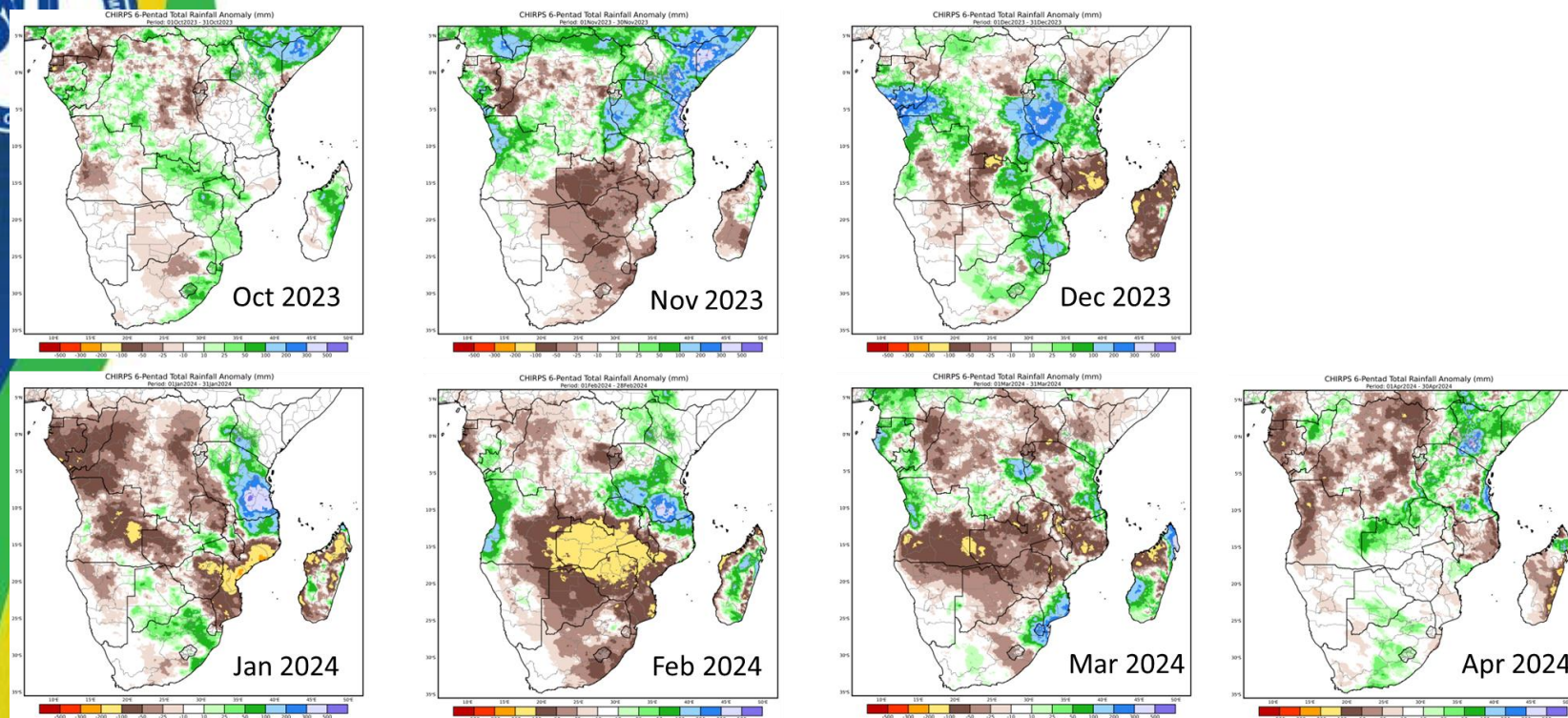


# Rainfall Performance for the 2023/24 season



# Subseasonal Precipitation Performance

**Largely below average: “false start”, “too little too late”**



Central parts of the region, this year had the driest February in over 100 years

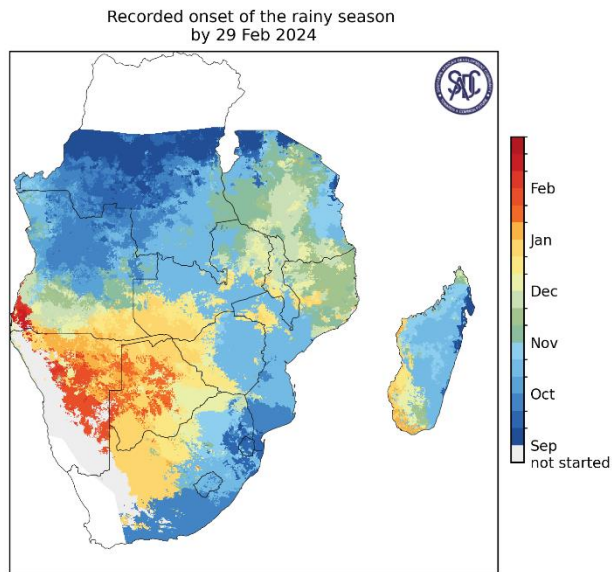




# IMPACTS OF THE RAINFALL DISTRIBUTION-ONSET

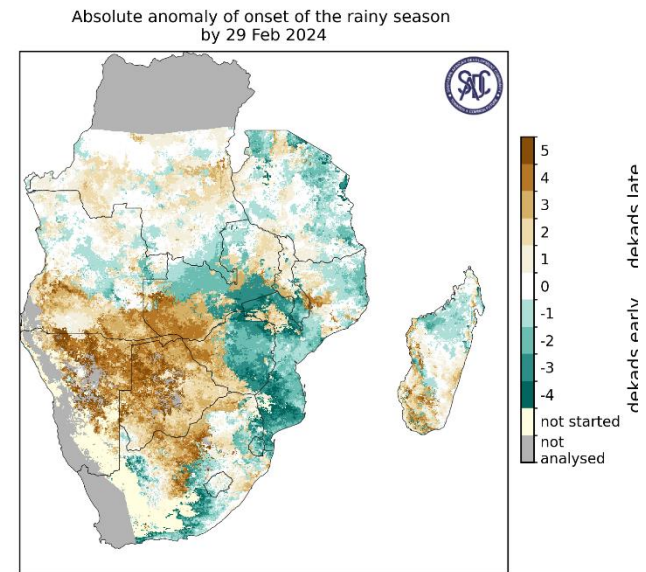


## ONSET – 2023/24 Season



Data source: CHIRPS v2.0  
Definition: 20mm threshold over 3 days and no dry spell in the next 10 days  
Calculated after the 1st of September

## Early or Late ONSET



Data source: CHIRPS v2.0  
Climatological period: 1991-2020  
Definition: 20mm threshold over 3 days and no dry spell in the next 10 days  
Calculated after the 1st of September

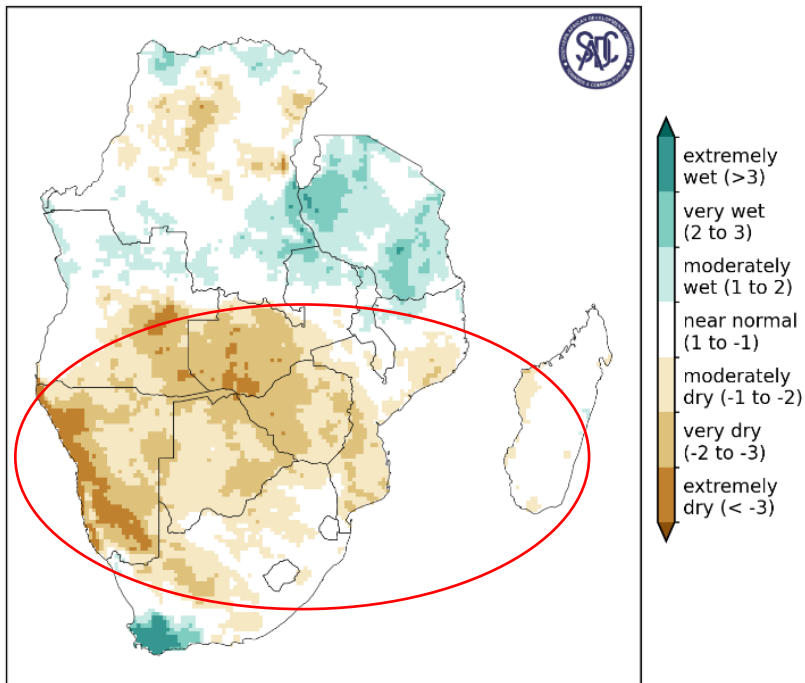
**ONSET**: Defined as accumulation of at least 20mm of rainfall over three days, which are not followed by a dry spell in the next 10 days (i.e. there is at least one rainfall event in the next 10 days)



# IMPACTS OF THE RAINFALL DISTRIBUTION-SPI

## SPI-12

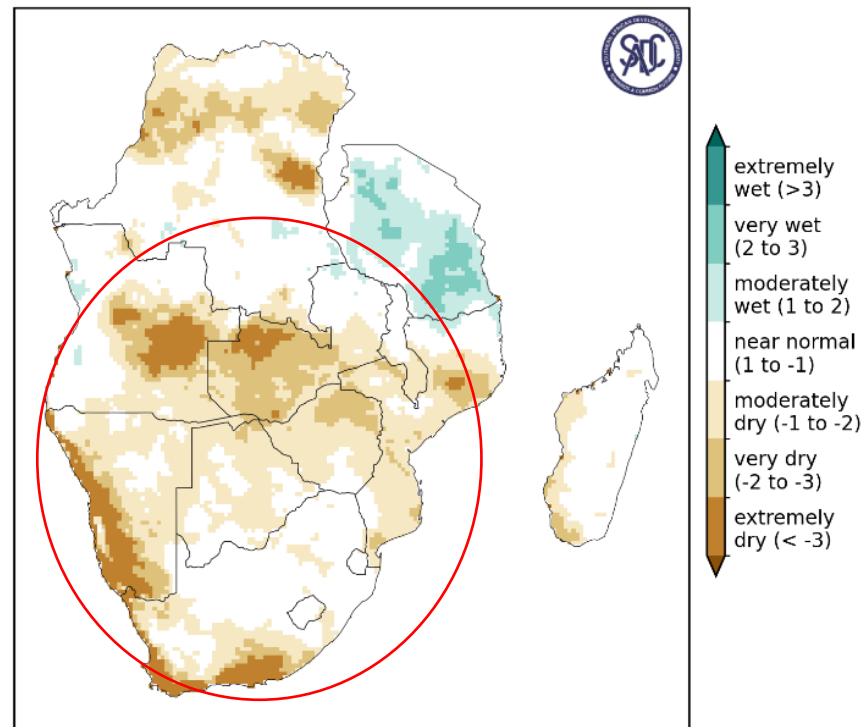
Recorded 12-month Standard Precipitation Index (SPI)  
Feb 2024



Data source: CHIRPS v2.0  
Climatological period: 1991-2020

## SPI-3

Recorded 3-month Standard Precipitation Index (SPI)  
Feb 2024



Data source: CHIRPS v2.0  
Climatological period: 1991-2020

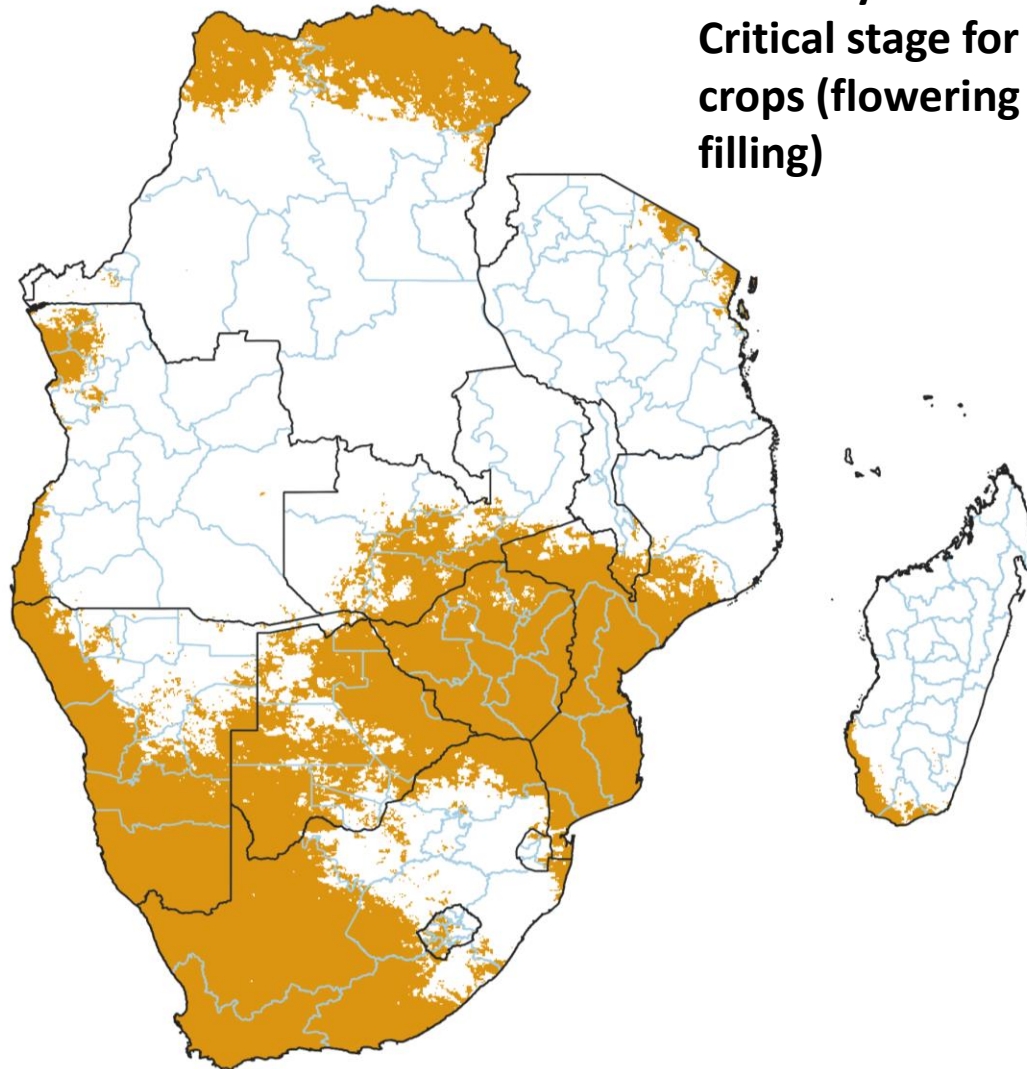
December-January-February (DJF)  
2023/24 period was the driest



# IMPACTS OF THE RAINFALL DISTRIBUTION-CDD

**Consecutive dry days >30 days**

**Between January and  
February 2024.  
Critical stage for maize  
crops (flowering and grain  
filling)**





# ACTION- REGIONAL LEVEL



- extensive dry spells over large parts of Angola, Botswana, Madagascar, Malawi, Mozambique, Namibia, South Africa, Lesotho, Zambia, and Zimbabwe. For many of these areas it was the driest February on record, accompanied by a month-long heat wave with temperatures 5 degrees above average
- WFP's Drought Hotspot Analysis concluded that an estimated 23.5 million people across the region have been affected by drought and requires assistance.
- Due to the severity of the drought, and the severity and frequency of tropical cyclones that overwhelmed the response capacity of most of the affected Member States.
- SADC issued a Regional Appeal for Humanitarian Assistance to support the ongoing response and recovery efforts by Member States.
- The Secretariat has developed and endorsed a SADC Humanitarian Appeal –Gap of 5.5 billion USD (Based on country needs requirement) -embark on the mobilization of resources to support the affected populations.





Meeting	Dates
Joint Meeting of Senior Officials responsible for Agriculture, Water, Energy and Disaster Risk Management	13th May 2024
Joint Meeting of Ministers Responsible for Agriculture, Water, Energy and Disaster Risk Management	14th May 2024
Standing Committee of Senior Officials	18th May 2024
Council of Ministers Meeting	19th May 2024
Extra Ordinary Summit for Heads of State and Government	20th May 2024







**THANK YOU  
MERCI  
ASANTE SANA  
OBRIGADO**

**Follow us on [Twitter: @sadccsc](https://twitter.com/sadccsc)**

